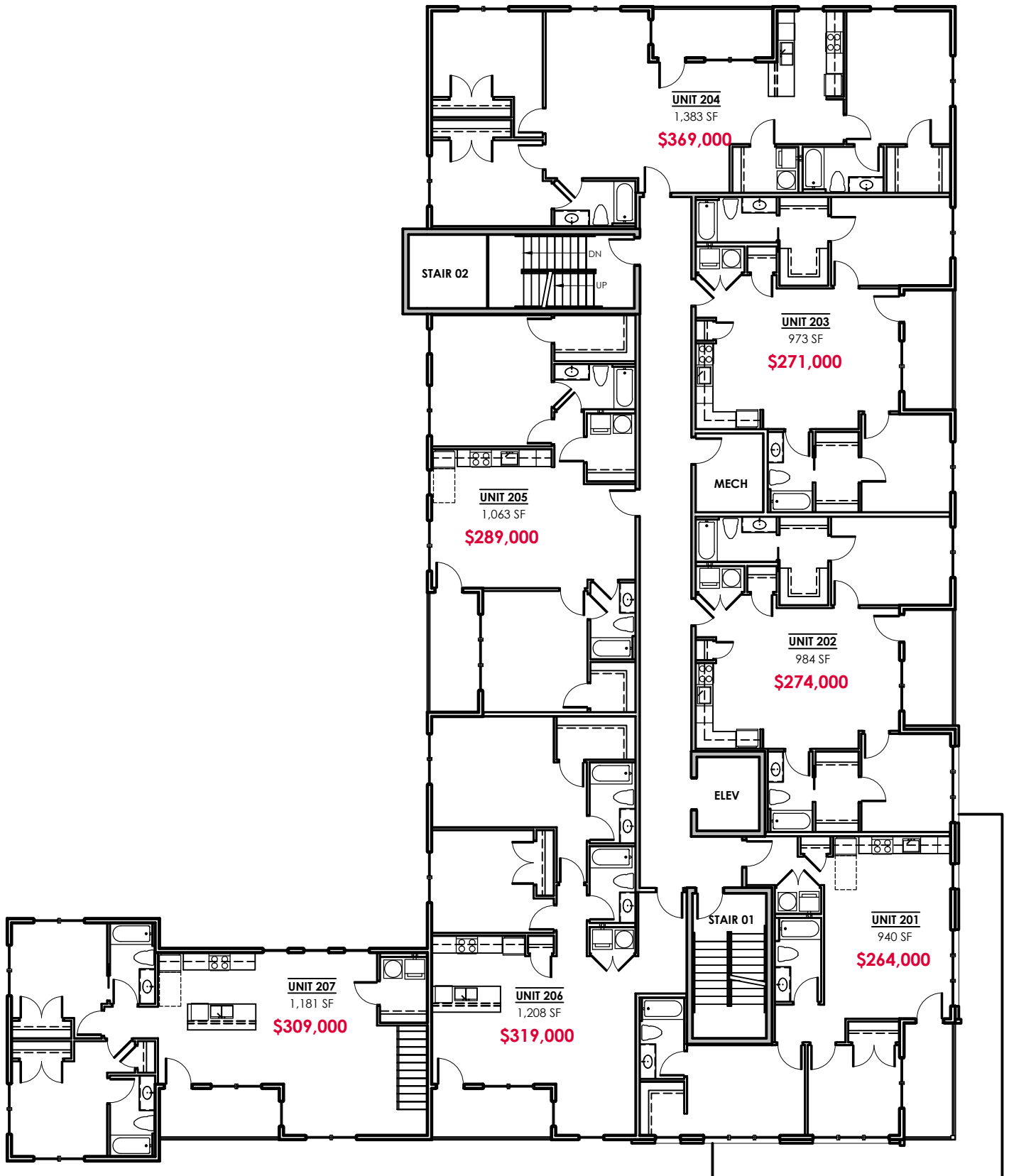


FIRST FLOOR PLAN

DISCLAIMER: Square footage and dimensional data is approximate. Unit layouts are for general reference only and are not intended to depict precisely the as-built conditions. Drawings are not to scale and are subject to change.

901 Porter Street

OLD MANCHESTER  
RICHMOND, VA

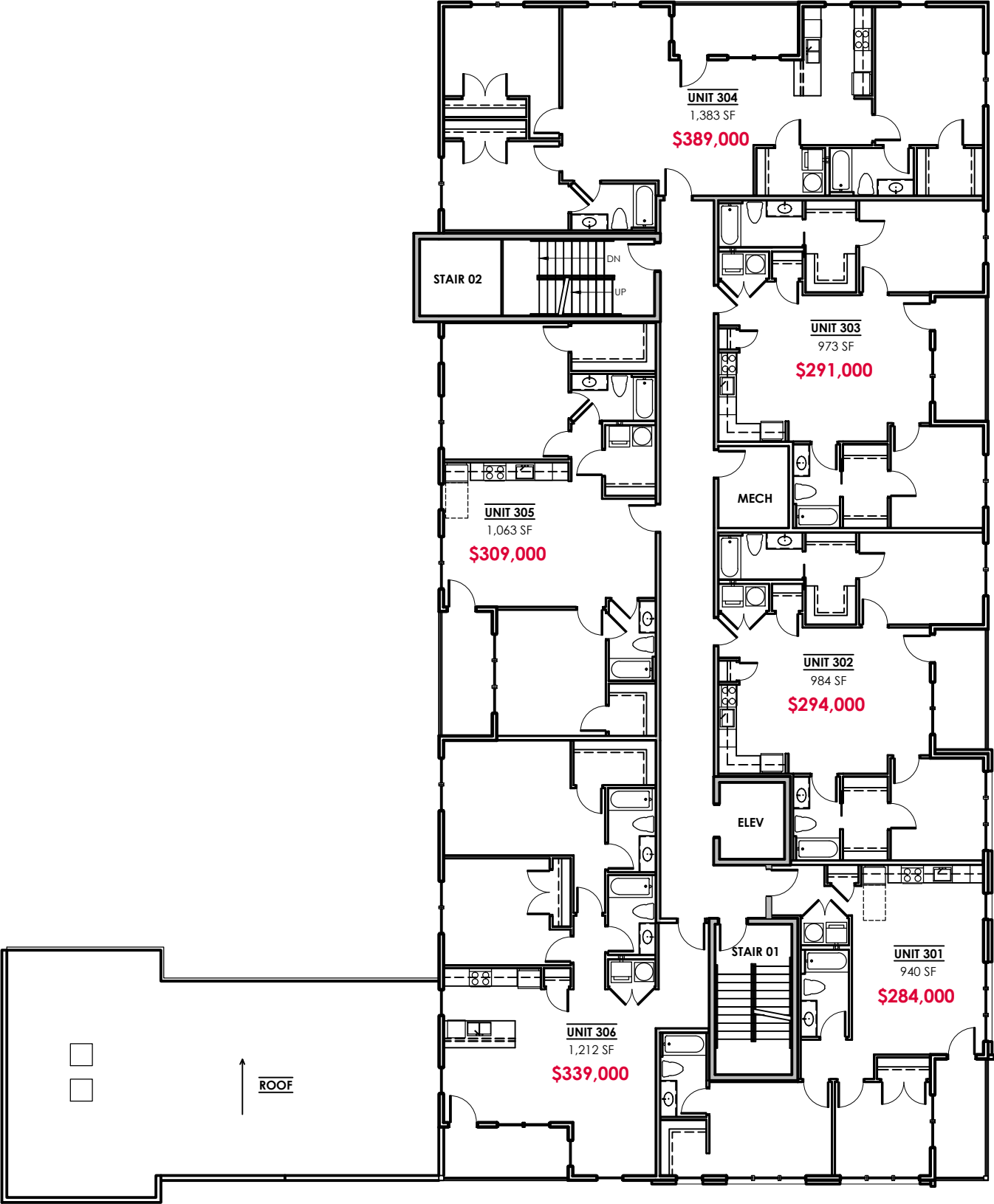


SECOND FLOOR PLAN

DISCLAIMER: Square footage and dimensional data is approximate. Unit layouts are for general reference only and are not intended to depict precisely the as-built conditions. Drawings are not to scale and are subject to change.

901 Porter Street

OLD MANCHESTER  
RICHMOND, VA

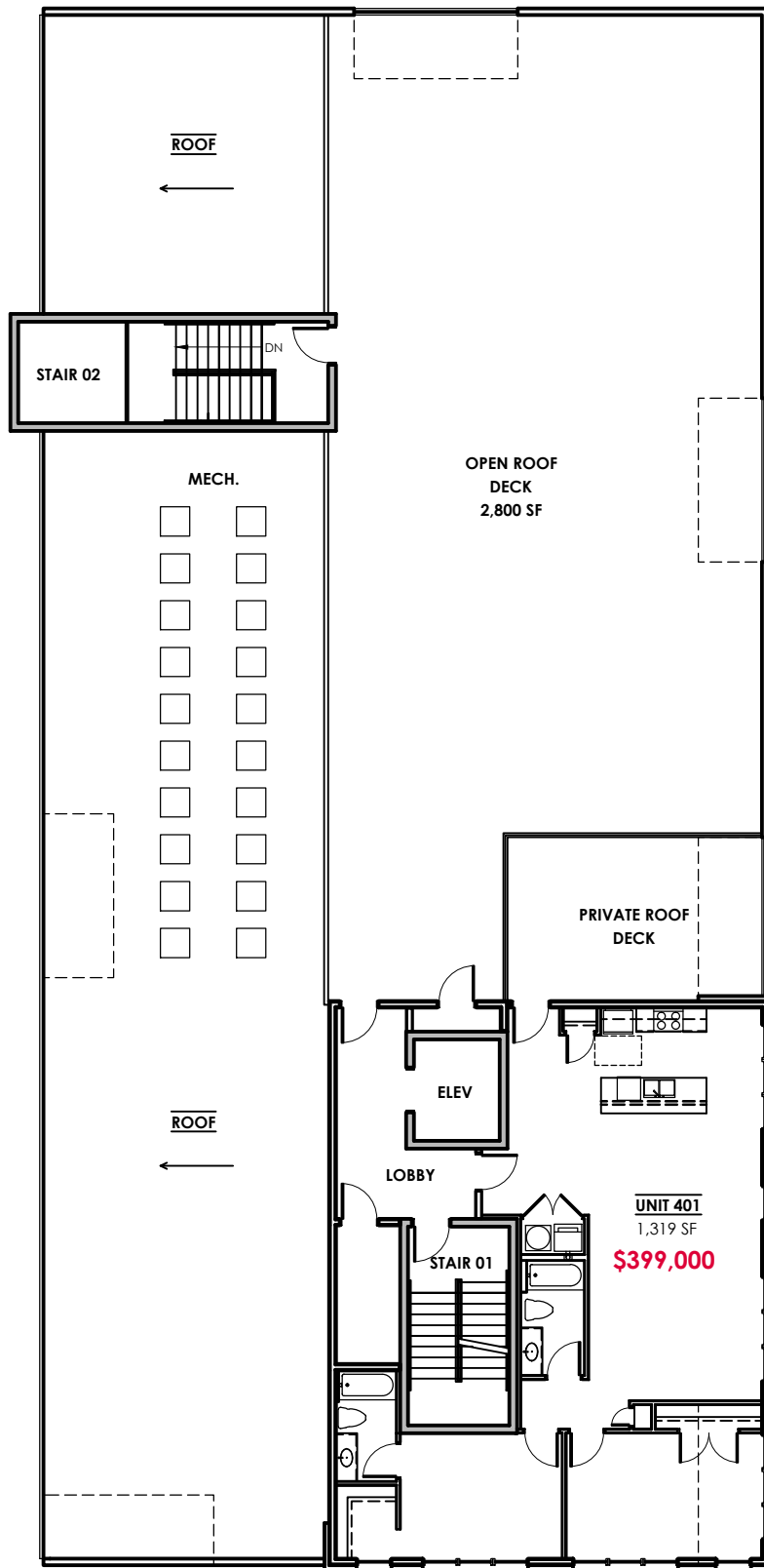


THIRD FLOOR PLAN

DISCLAIMER: Square footage and dimensional data is approximate. Unit layouts are for general reference only and are not intended to depict precisely the as-built conditions. Drawings are not to scale and are subject to change.

901 Porter Street

OLD MANCHESTER  
RICHMOND, VA

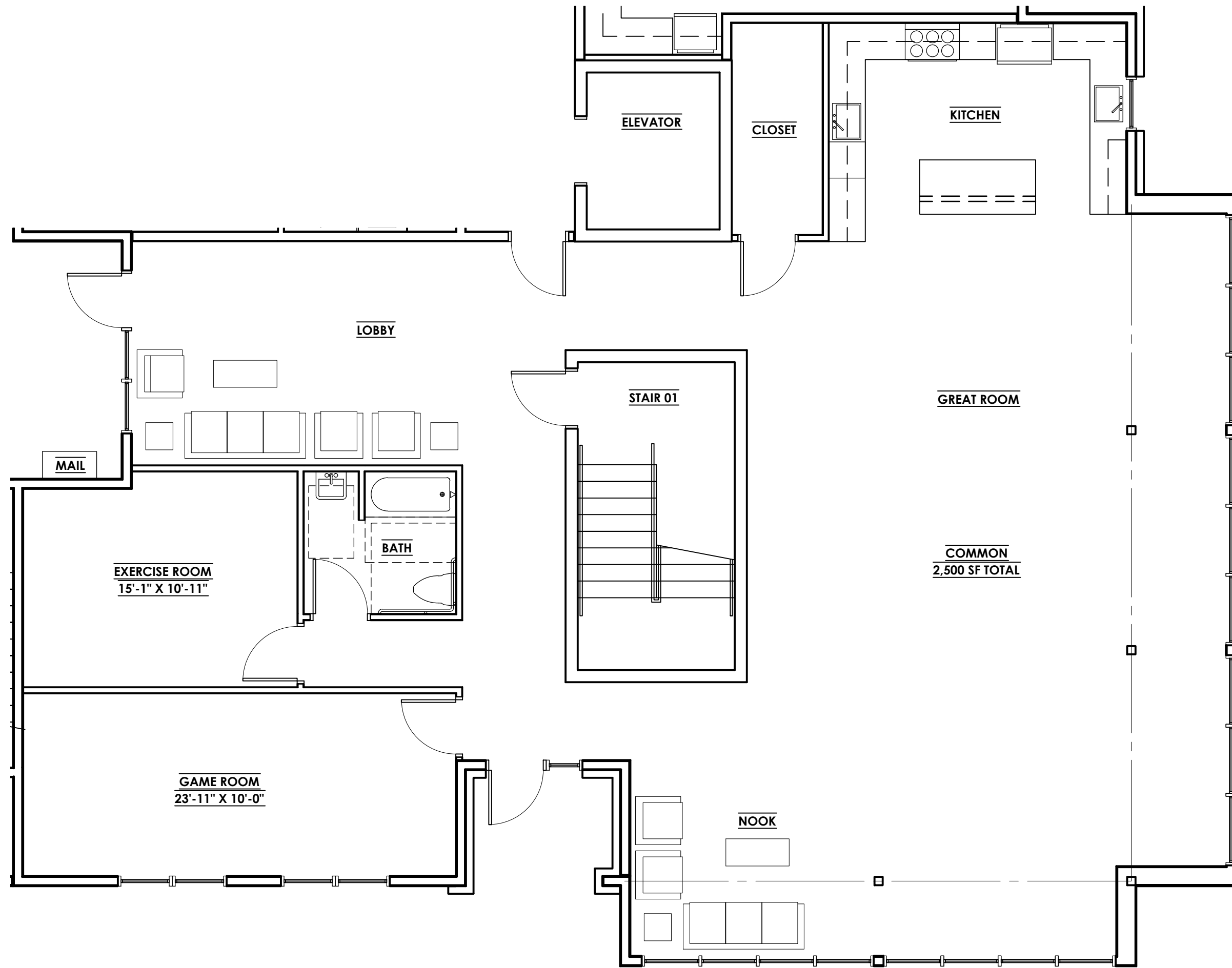


## FOURTH FLOOR / ROOF PLAN

DISCLAIMER: Square footage and dimensional data is approximate. Unit layouts are for general reference only and are not intended to depict precisely the as-built conditions. Drawings are not to scale and are subject to change.

# 901 Porter Street

OLD MANCHESTER  
RICHMOND, VA

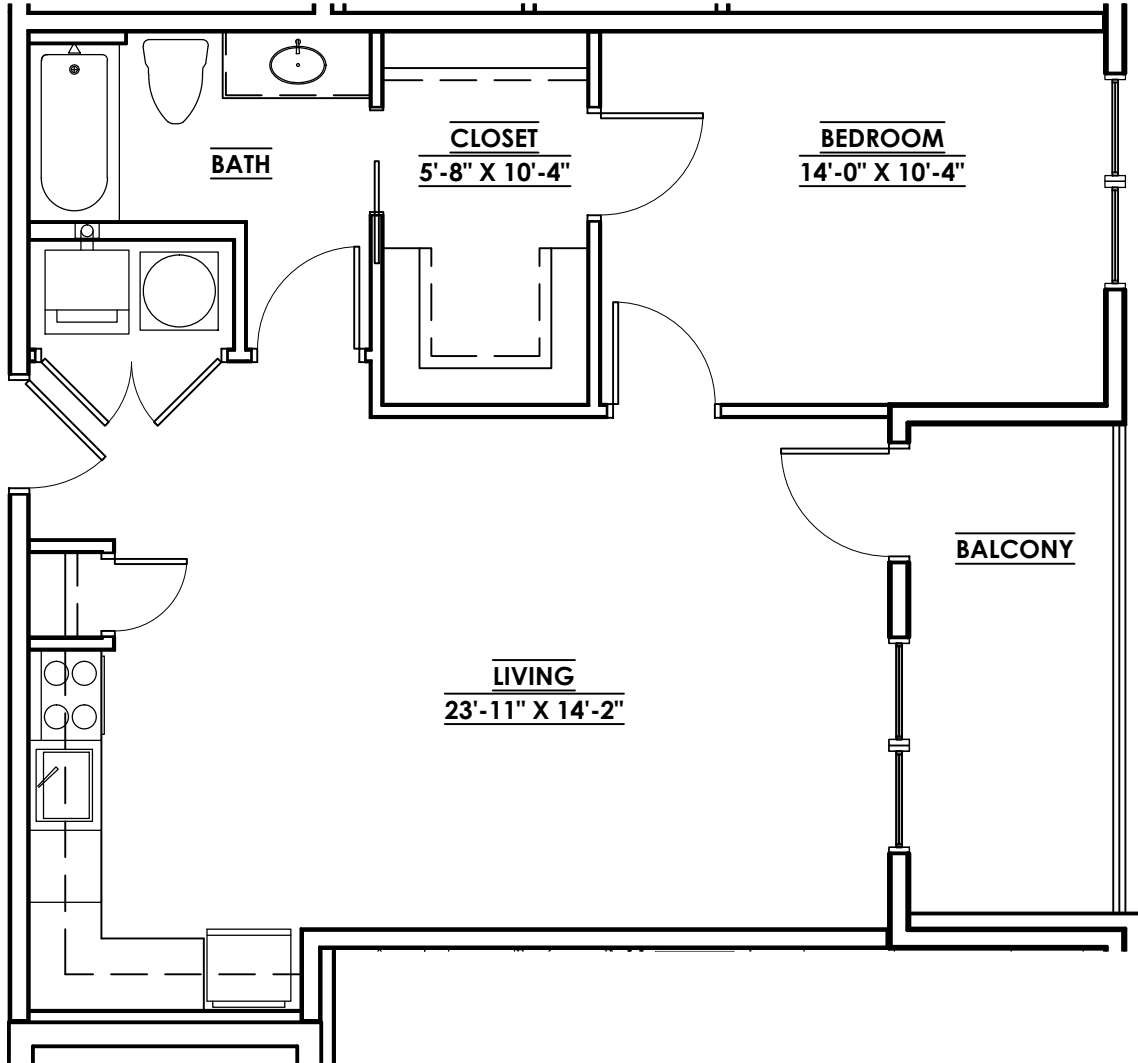


**COMMON AREA**  
2,500 SF

DISCLAIMER: Square footage and dimensional data is approximate. Unit layouts are for general reference only and are not intended to depict precisely the as-built conditions. Drawings are not to scale and are subject to change.

901 Porter Street

OLD MANCHESTER  
RICHMOND, VA

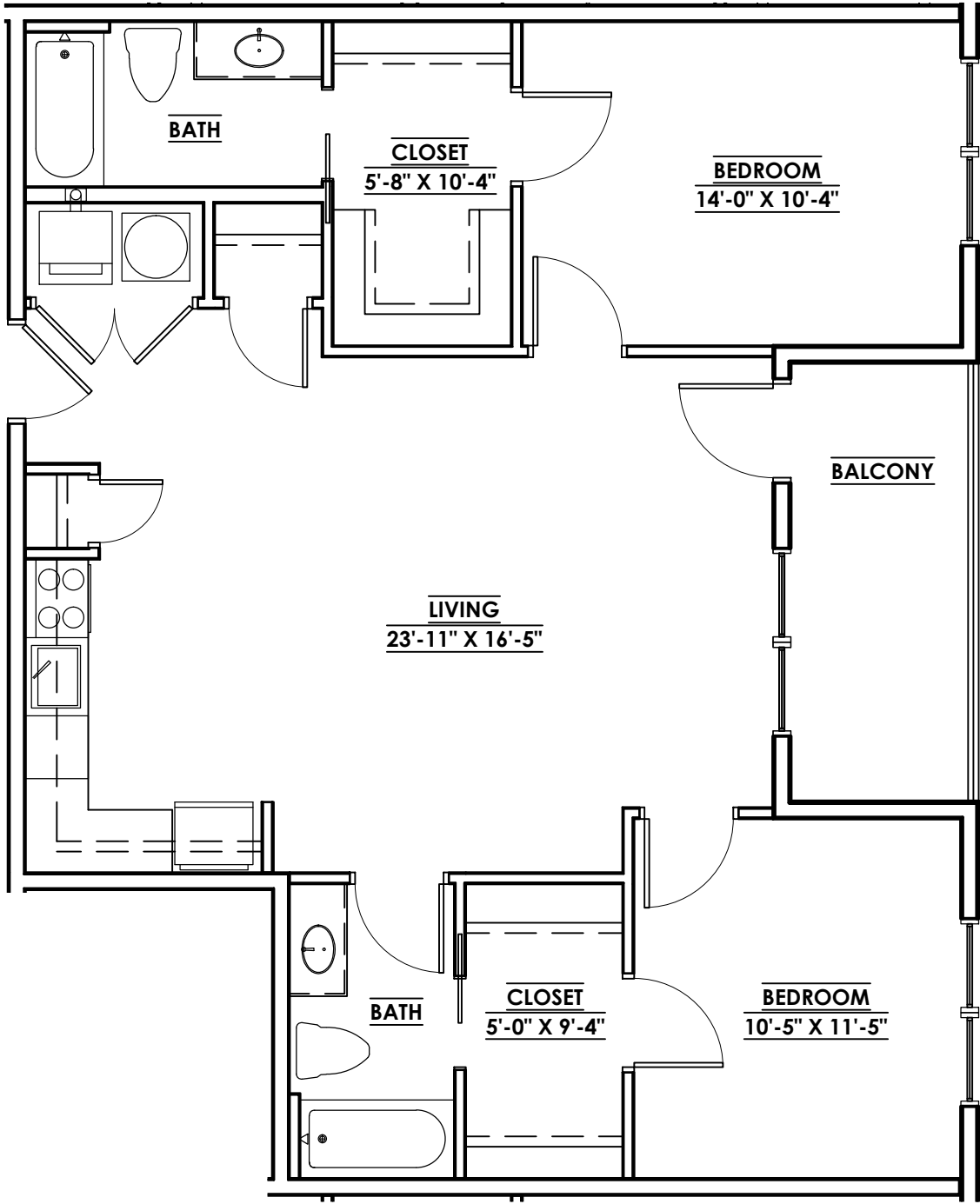


**UNIT: 102**  
705 SF  
84 SF Balcony

DISCLAIMER: Square footage and dimensional data is approximate. Unit layouts are for general reference only and are not intended to depict precisely the as-built conditions. Drawings are not to scale and are subject to change.

901 Porter Street

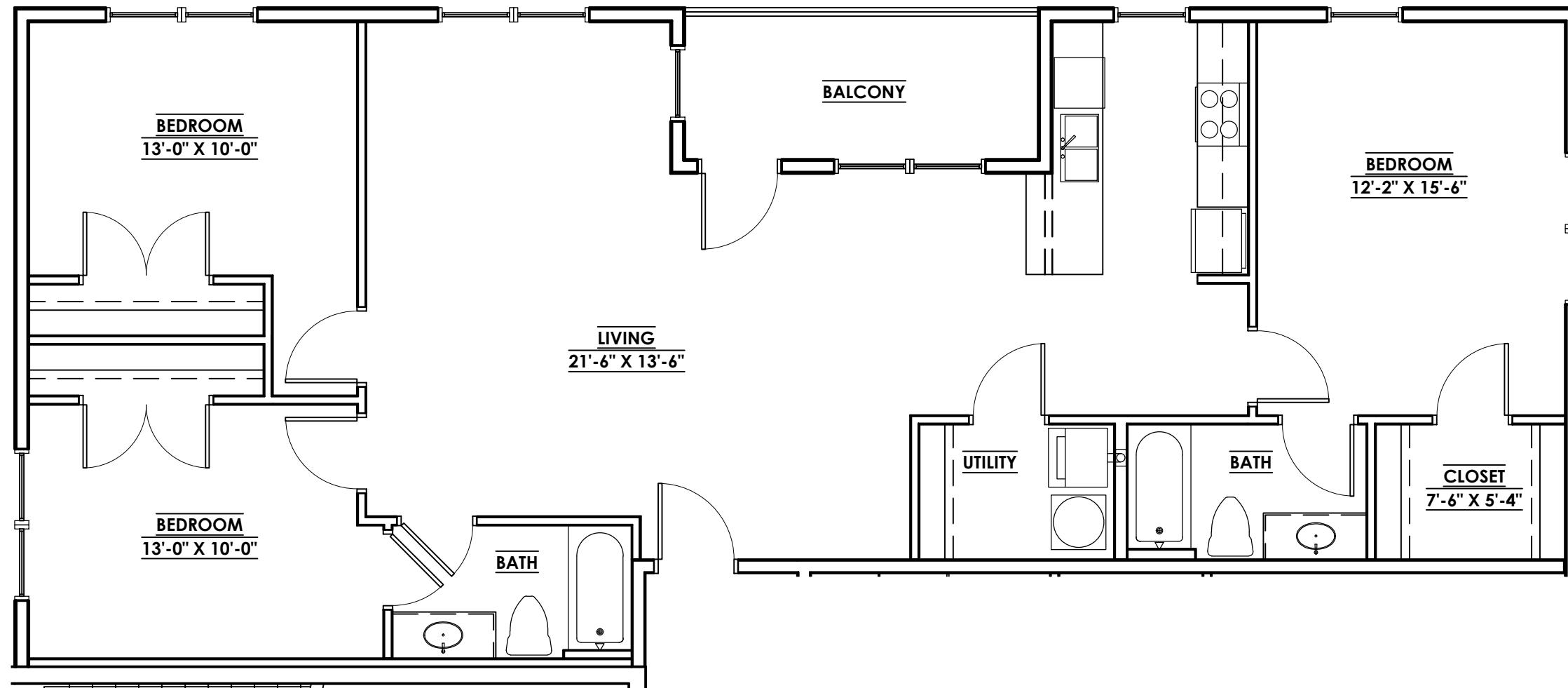
OLD MANCHESTER  
RICHMOND, VA



UNIT: 103, 203, & 303  
 973 SF - 84 SF Balcony  
 UNIT: 202, & 302  
 984 SF - 84 SF Balcony

DISCLAIMER: Square footage and dimensional data is approximate. Unit layouts are for general reference only and are not intended to depict precisely the as-built conditions. Drawings are not to scale and are subject to change.

901 Porter Street  
 OLD MANCHESTER  
 RICHMOND, VA



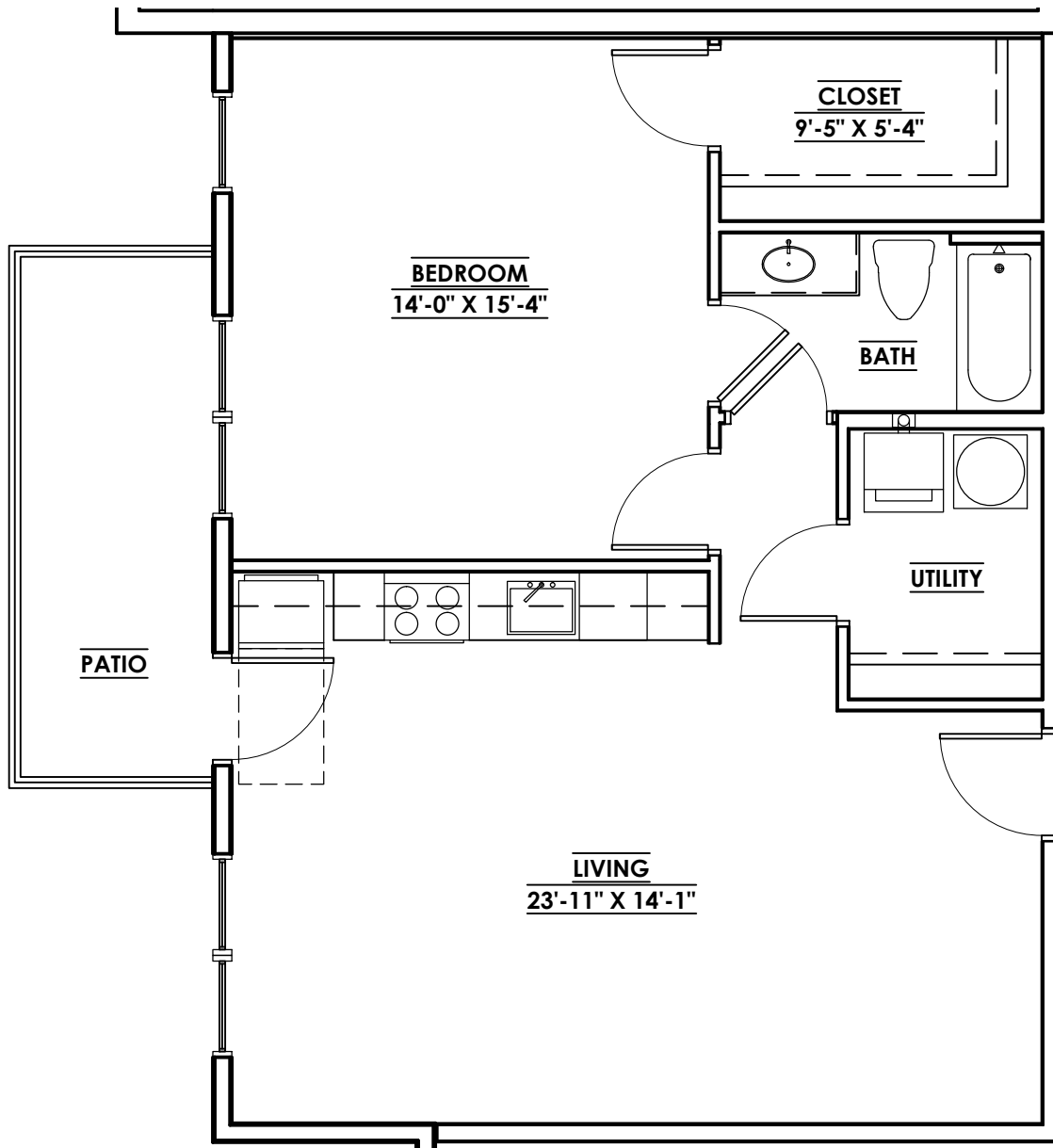
UNIT: 104, 204, 304  
 1,383 SF  
 84 SF Balcony

DISCLAIMER: Square footage and dimensional data is approximate. Unit layouts are for general reference only and are not intended to depict precisely the as-built conditions. Drawings are not to scale and are subject to change.

901 Porter Street

OLD MANCHESTER  
 RICHMOND, VA



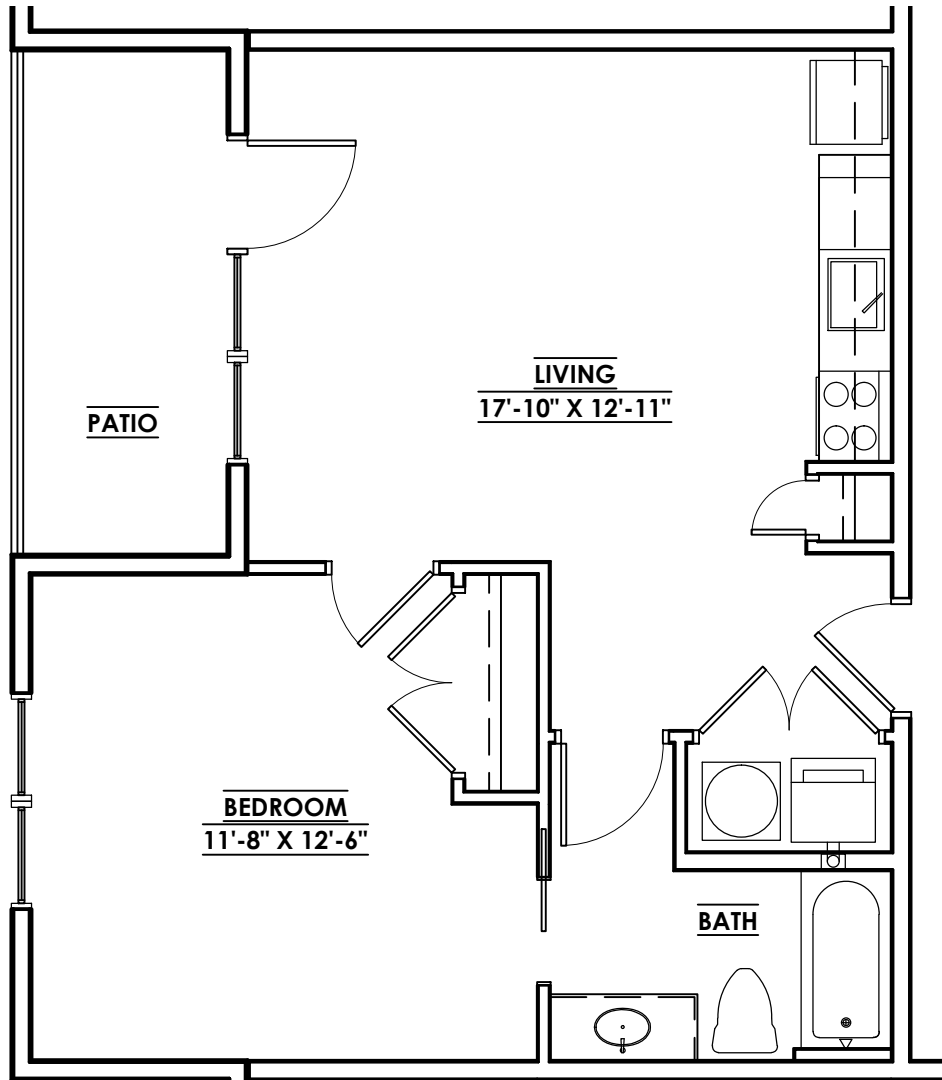


**UNIT: 105**  
789 SF  
84 SF Patio

DISCLAIMER: Square footage and dimensional data is approximate. Unit layouts are for general reference only and are not intended to depict precisely the as-built conditions. Drawings are not to scale and are subject to change.

901 Porter Street

OLD MANCHESTER  
RICHMOND, VA

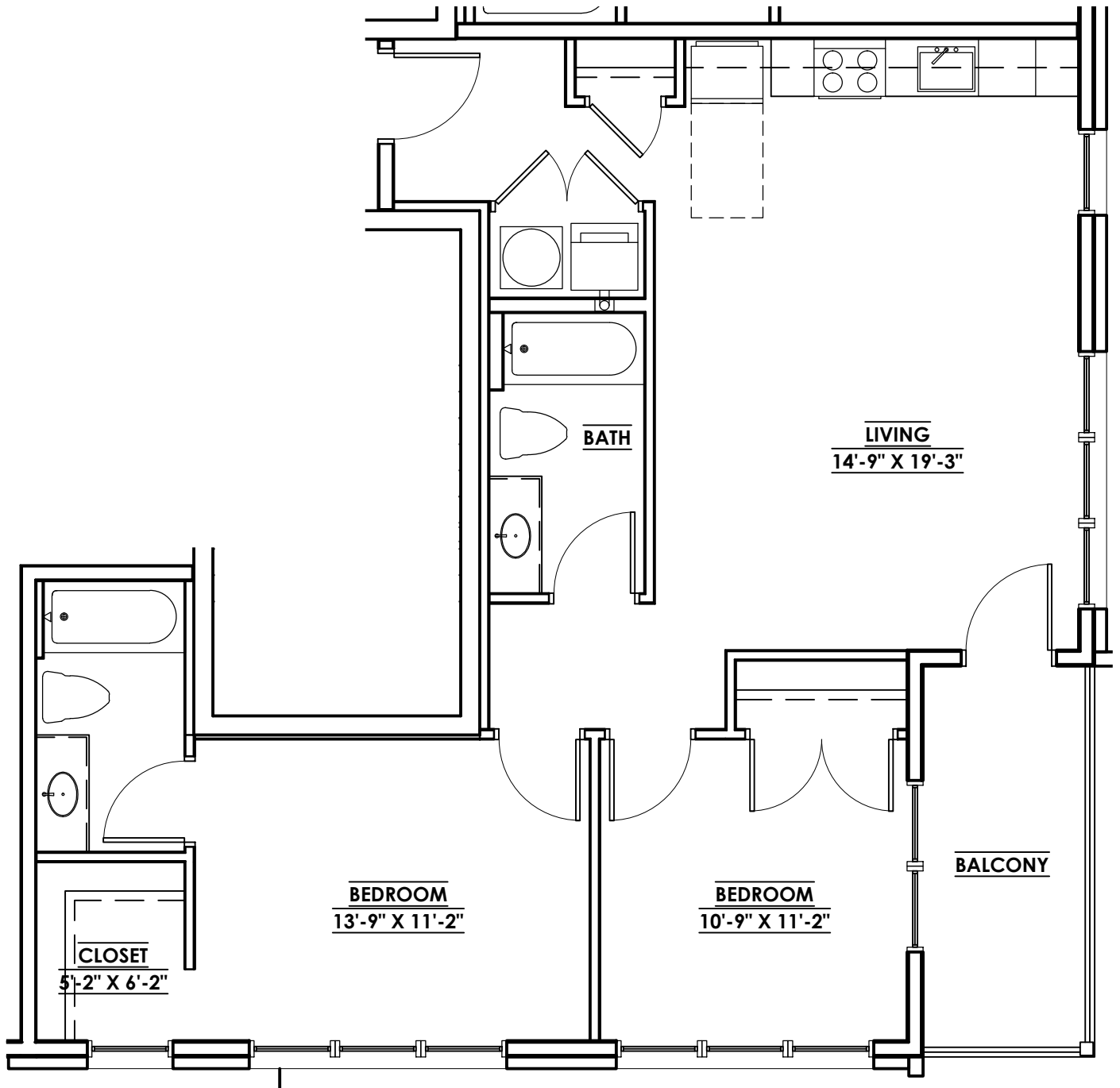


**UNIT: 106**  
593 SF  
84 SF Patio

DISCLAIMER: Square footage and dimensional data is approximate. Unit layouts are for general reference only and are not intended to depict precisely the as-built conditions. Drawings are not to scale and are subject to change.

901 Porter Street

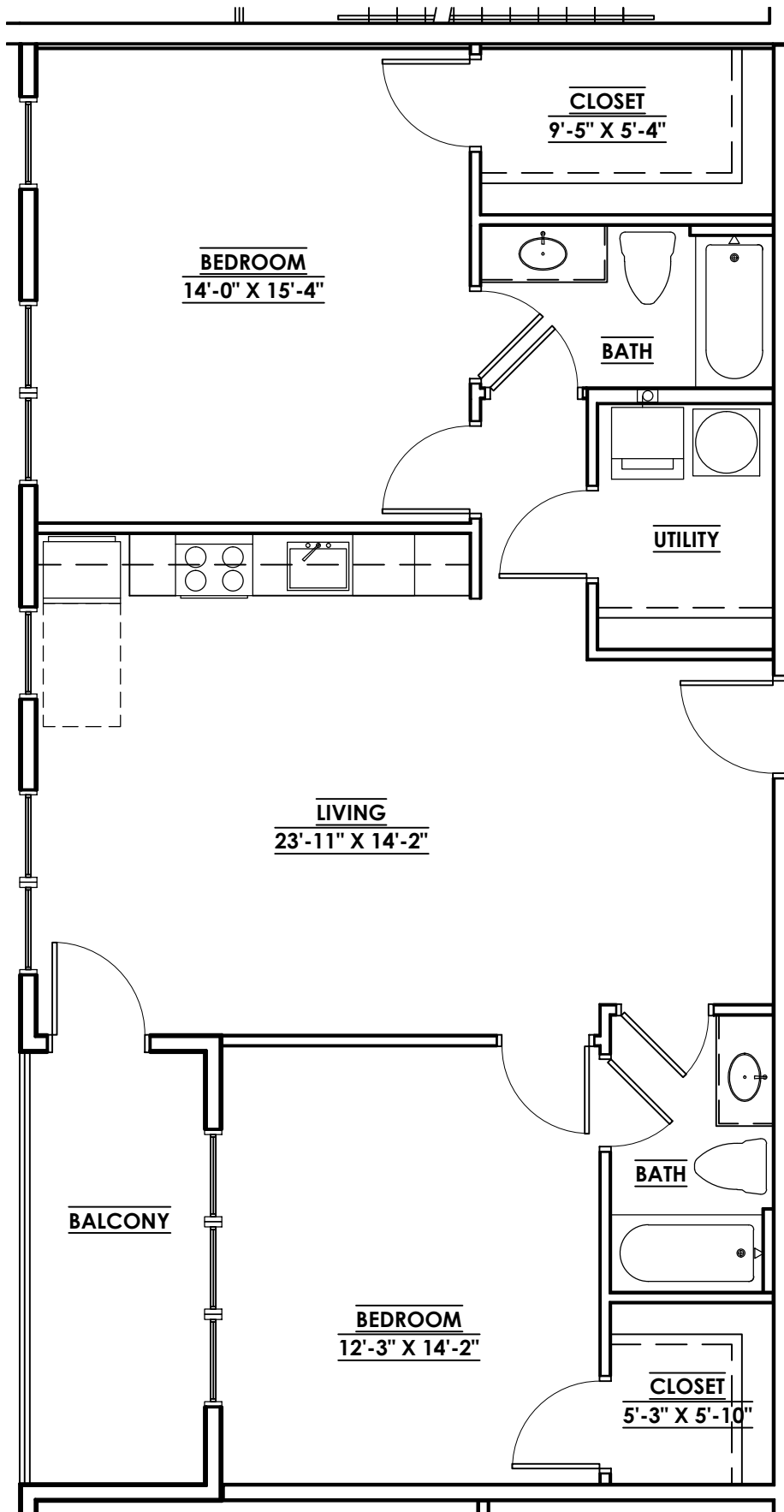
OLD MANCHESTER  
RICHMOND, VA



UNIT: 201 & 301  
 940 SF  
 84 SF Balcony

DISCLAIMER: Square footage and dimensional data is approximate. Unit layouts are for general reference only and are not intended to depict precisely the as-built conditions. Drawings are not to scale and are subject to change.

901 Porter Street  
 OLD MANCHESTER  
 RICHMOND, VA

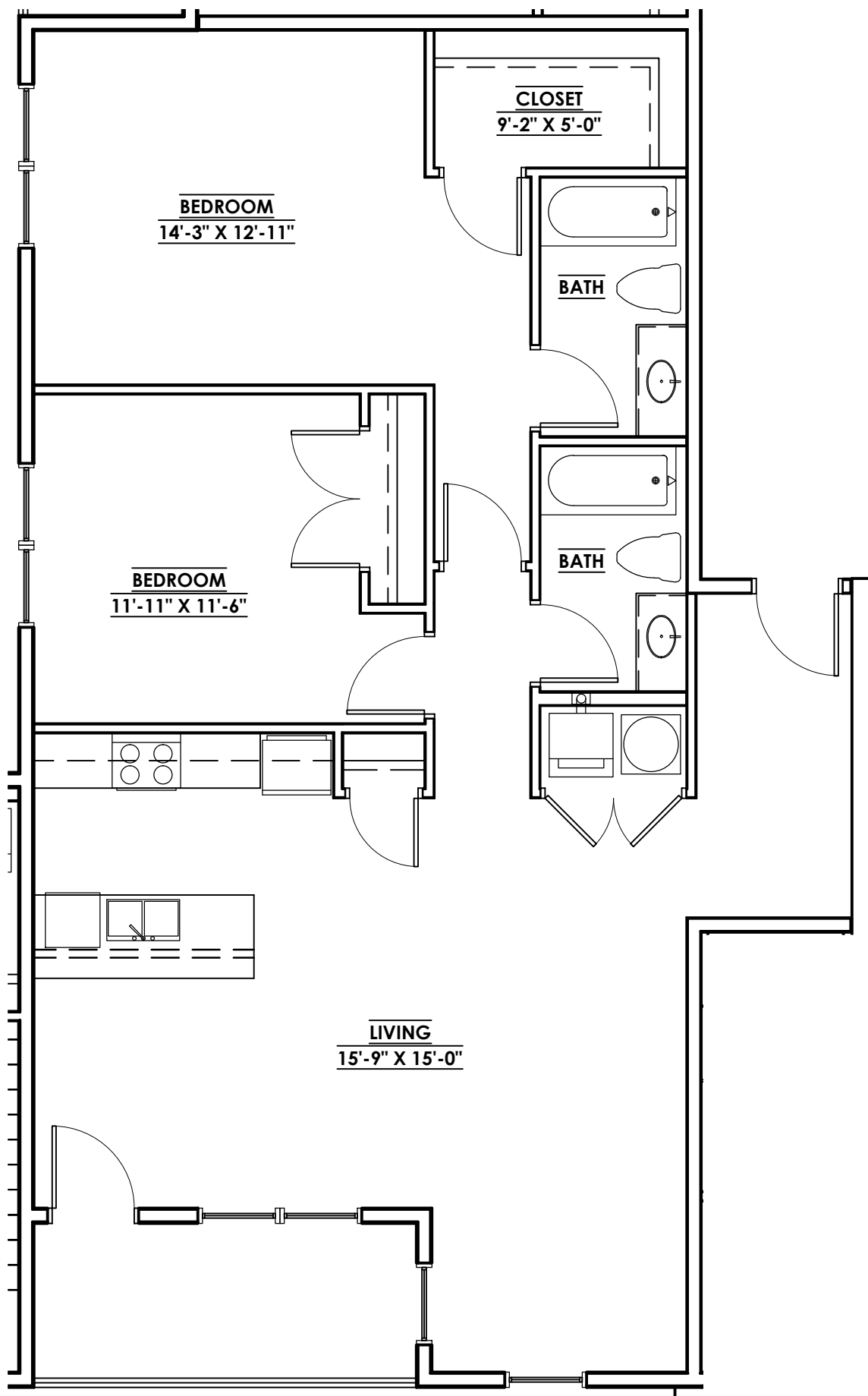


**UNIT: 205 & 305**  
 1,063 SF  
 84 SF Balcony

DISCLAIMER: Square footage and dimensional data is approximate. Unit layouts are for general reference only and are not intended to depict precisely the as-built conditions. Drawings are not to scale and are subject to change.

901 Porter Street

OLD MANCHESTER  
 RICHMOND, VA

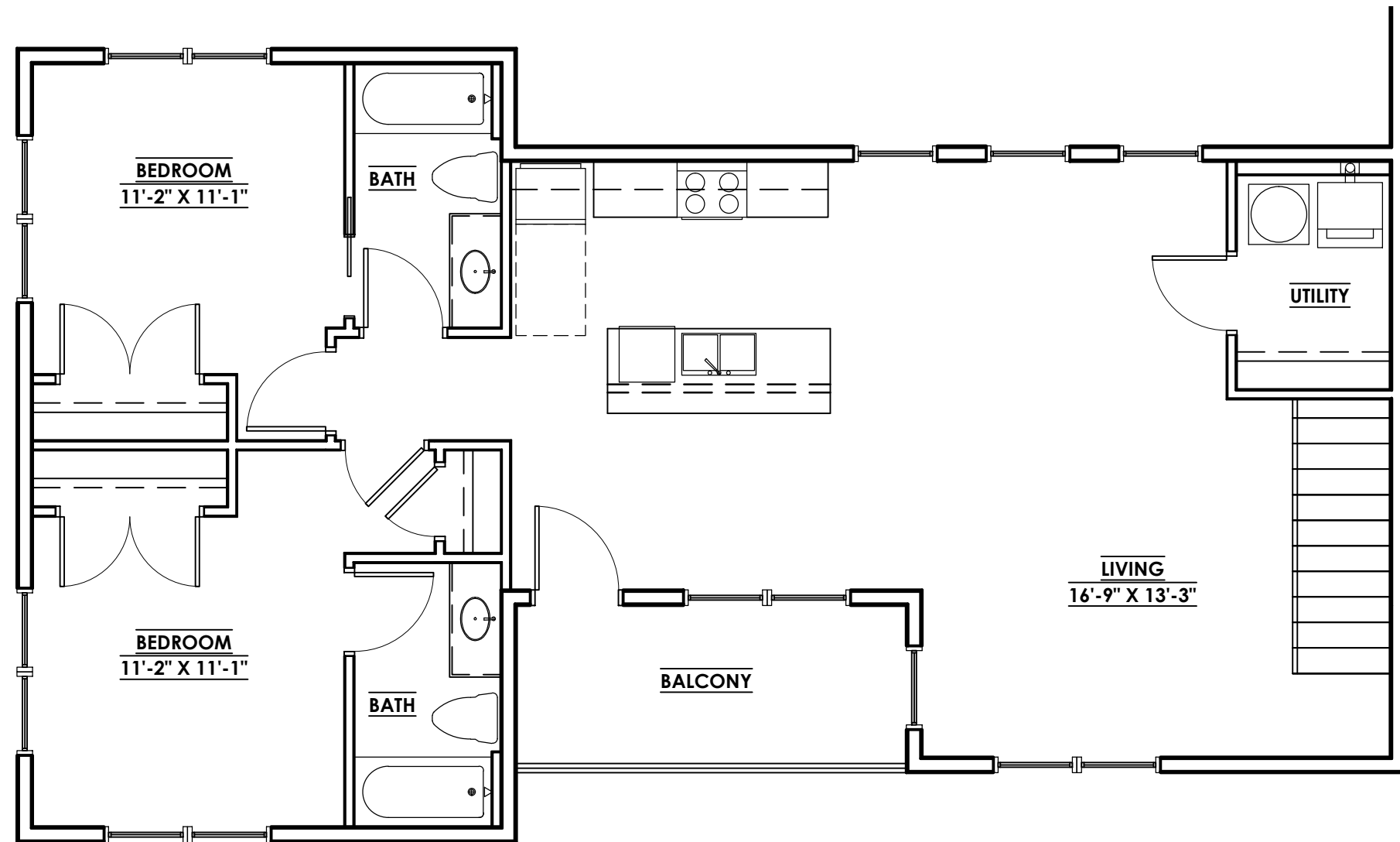


UNIT: 206 & 306  
 1,208 SF  
 84 SF Balcony

DISCLAIMER: Square footage and dimensional data is approximate. Unit layouts are for general reference only and are not intended to depict precisely the as-built conditions. Drawings are not to scale and are subject to change.

901 Porter Street

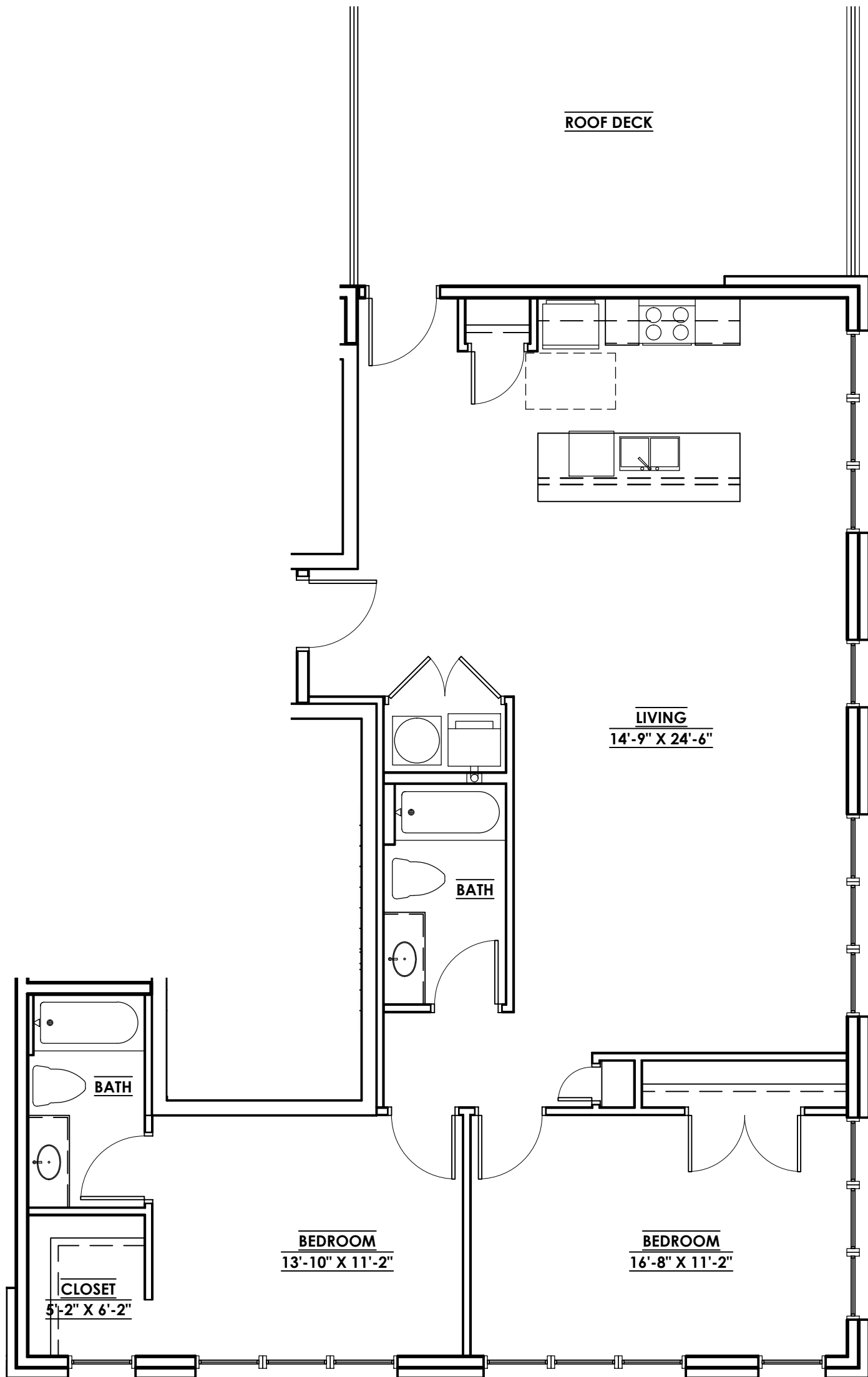
OLD MANCHESTER  
 RICHMOND, VA



UNIT: 207  
1,181 SF  
84 SF Balcony

DISCLAIMER: Square footage and dimensional data is approximate. Unit layouts are for general reference only and are not intended to depict precisely the as-built conditions. Drawings are not to scale and are subject to change.

901 Porter Street  
OLD MANCHESTER  
RICHMOND, VA



UNIT: 401  
 1,319 SF  
 300 SF Roof Deck

DISCLAIMER: Square footage and dimensional data is approximate. Unit layouts are for general reference only and are not intended to depict precisely the as-built conditions. Drawings are not to scale and are subject to change.

901 Porter Street  
 OLD MANCHESTER  
 RICHMOND, VA