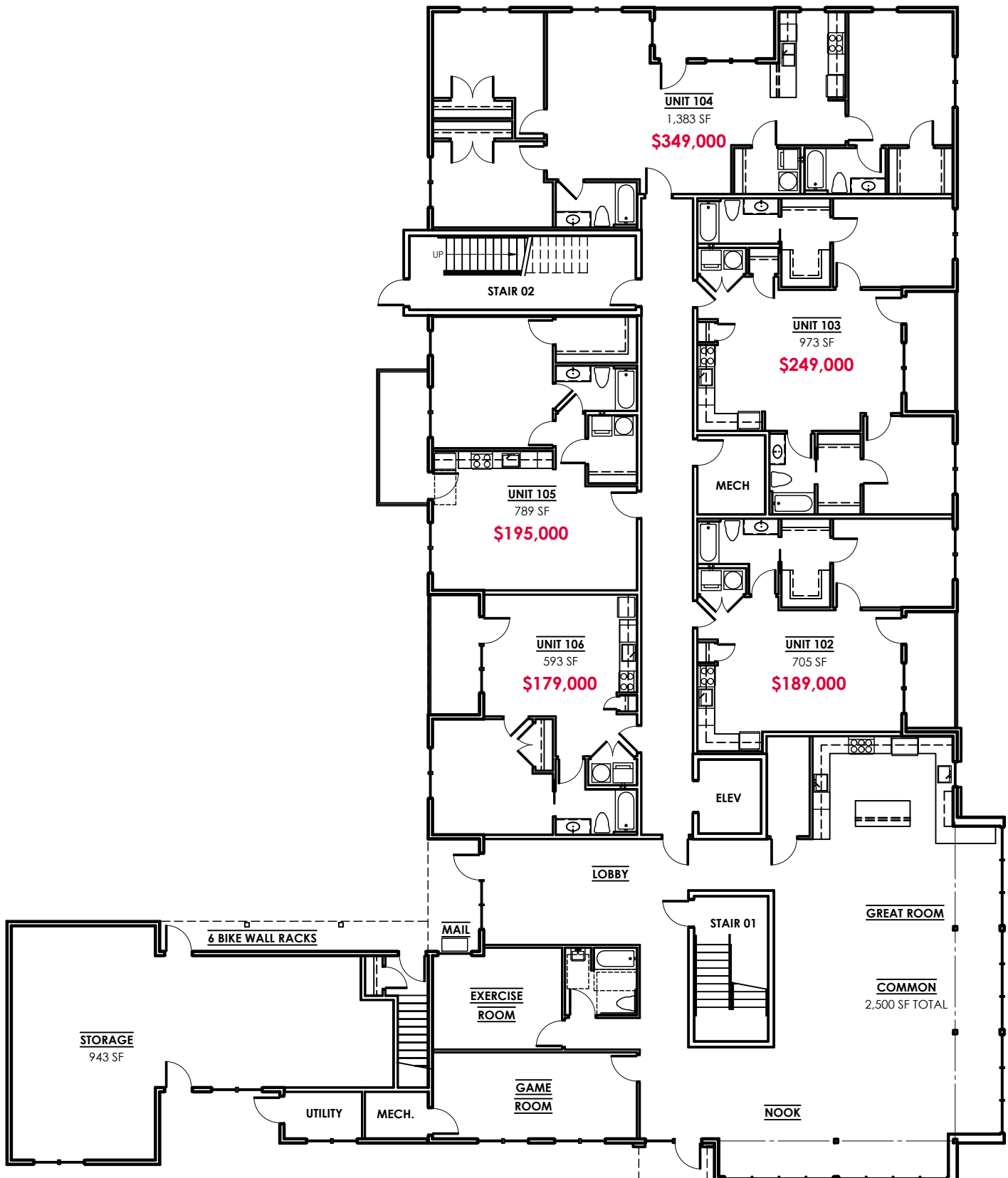
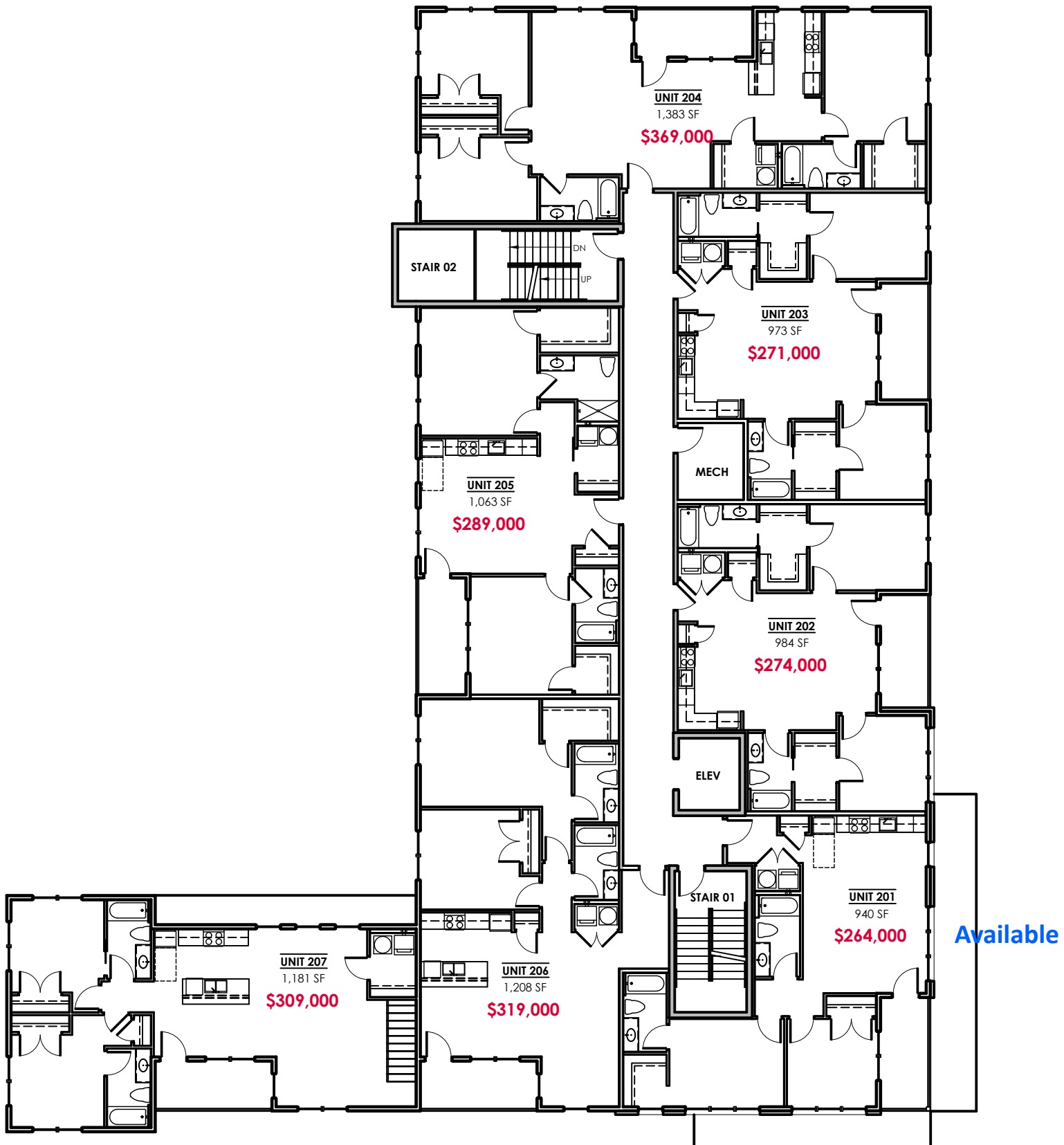


Available



Pre-Construction Pricing

12.17.2018

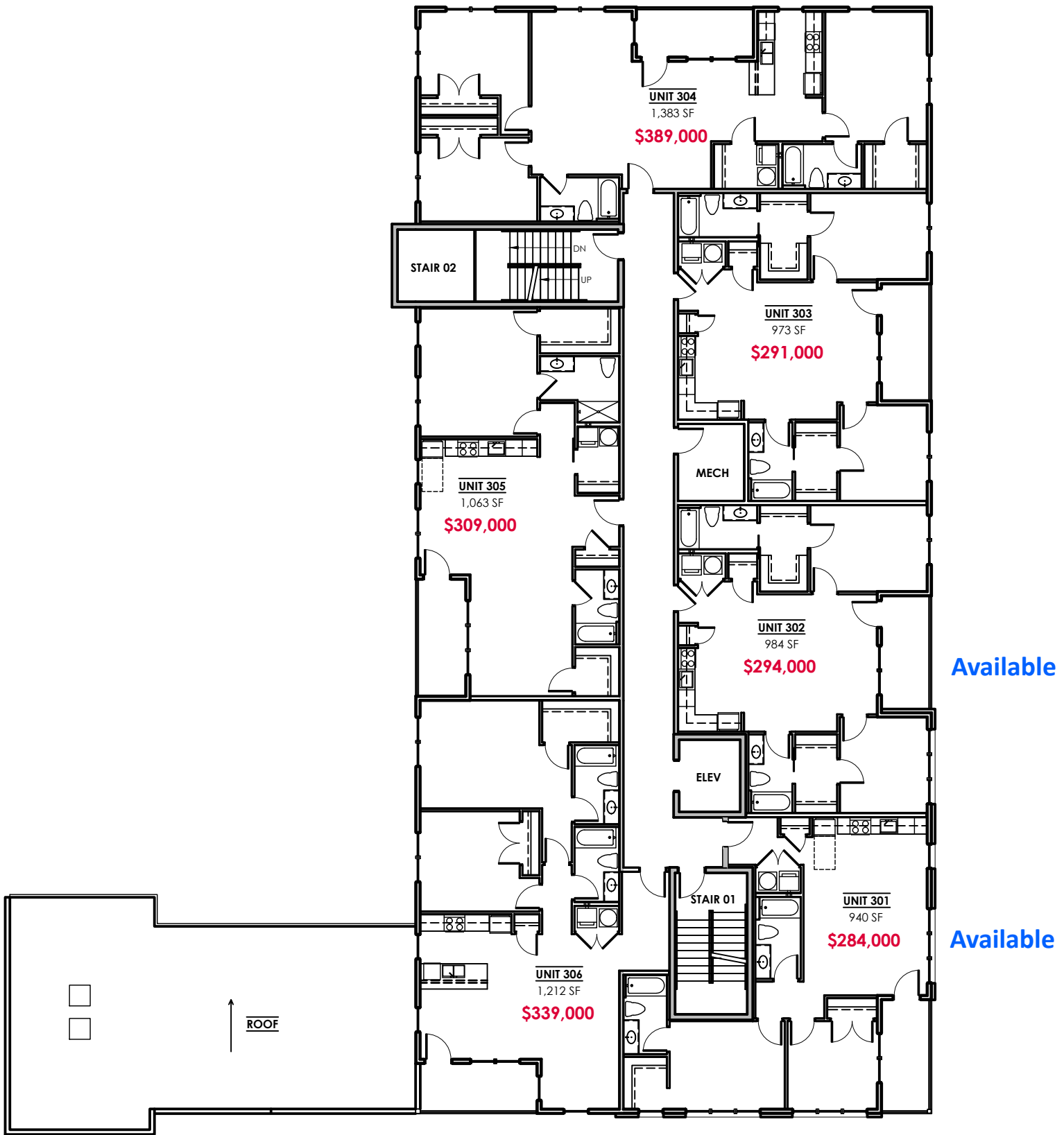


SECOND FLOOR PLAN

DISCLAIMER: Square footage and dimensional data is approximate. Unit layouts are for general reference only and are not intended to depict precisely the as-built conditions. Drawings are not to scale and are subject to change.

901 Porter Street

OLD MANCHESTER
RICHMOND, VA



THIRD FLOOR PLAN

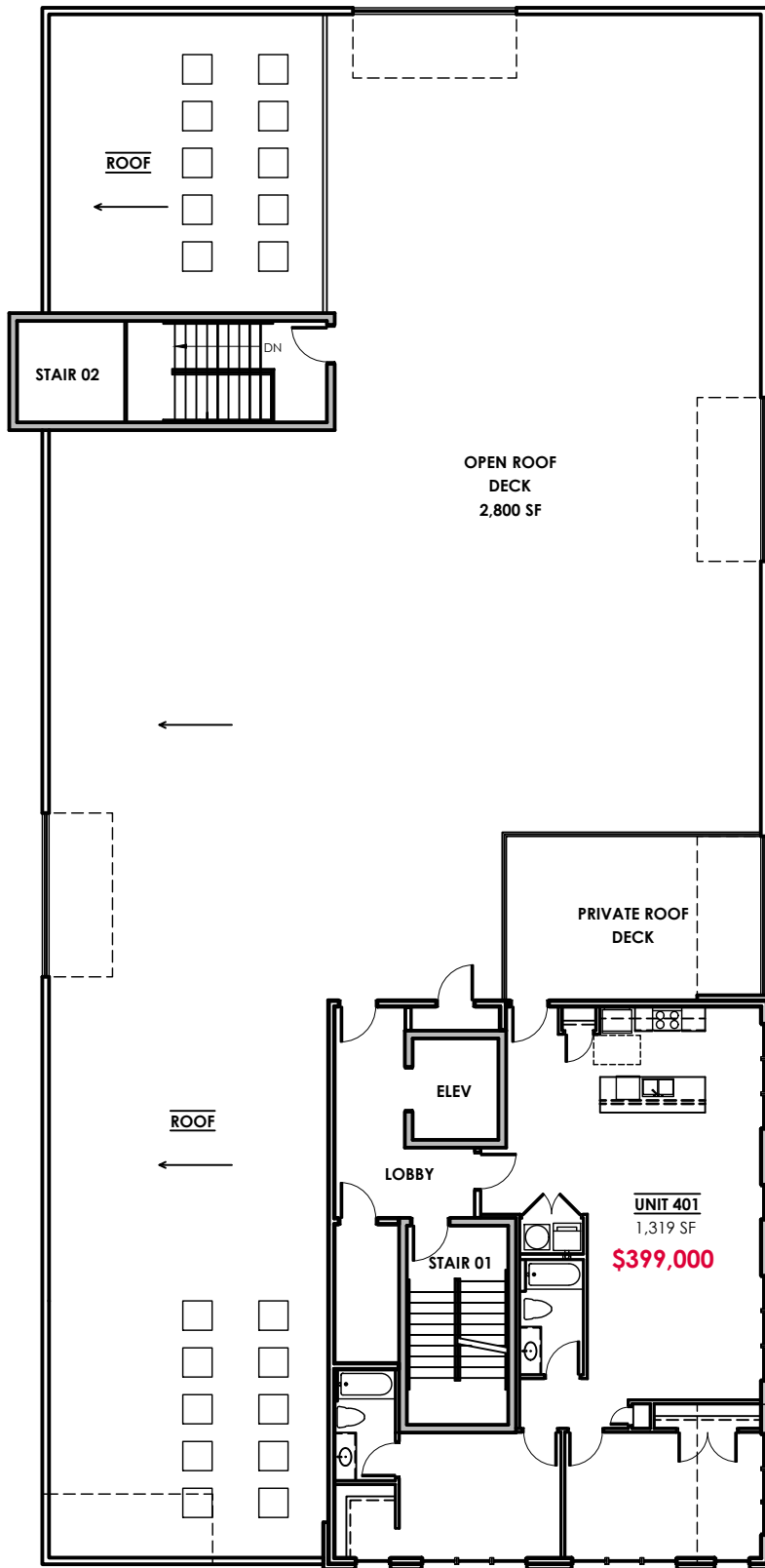
DISCLAIMER: Square footage and dimensional data is approximate. Unit layouts are for general reference only and are not intended to depict precisely the as-built conditions. Drawings are not to scale and are subject to change.

901 Porter Street

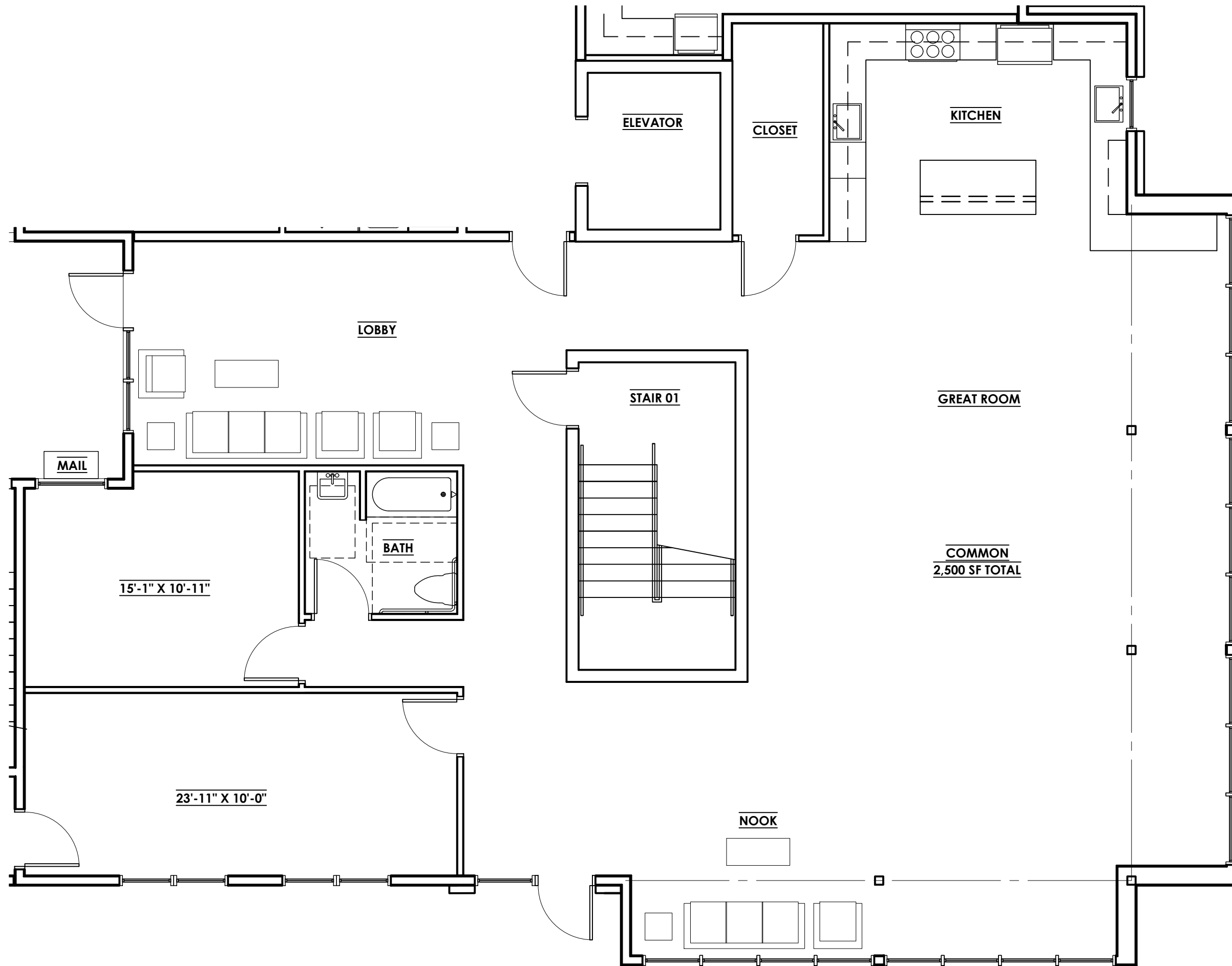
OLD MANCHESTER
RICHMOND, VA

Pre-Construction Pricing

12.17.2018



Available

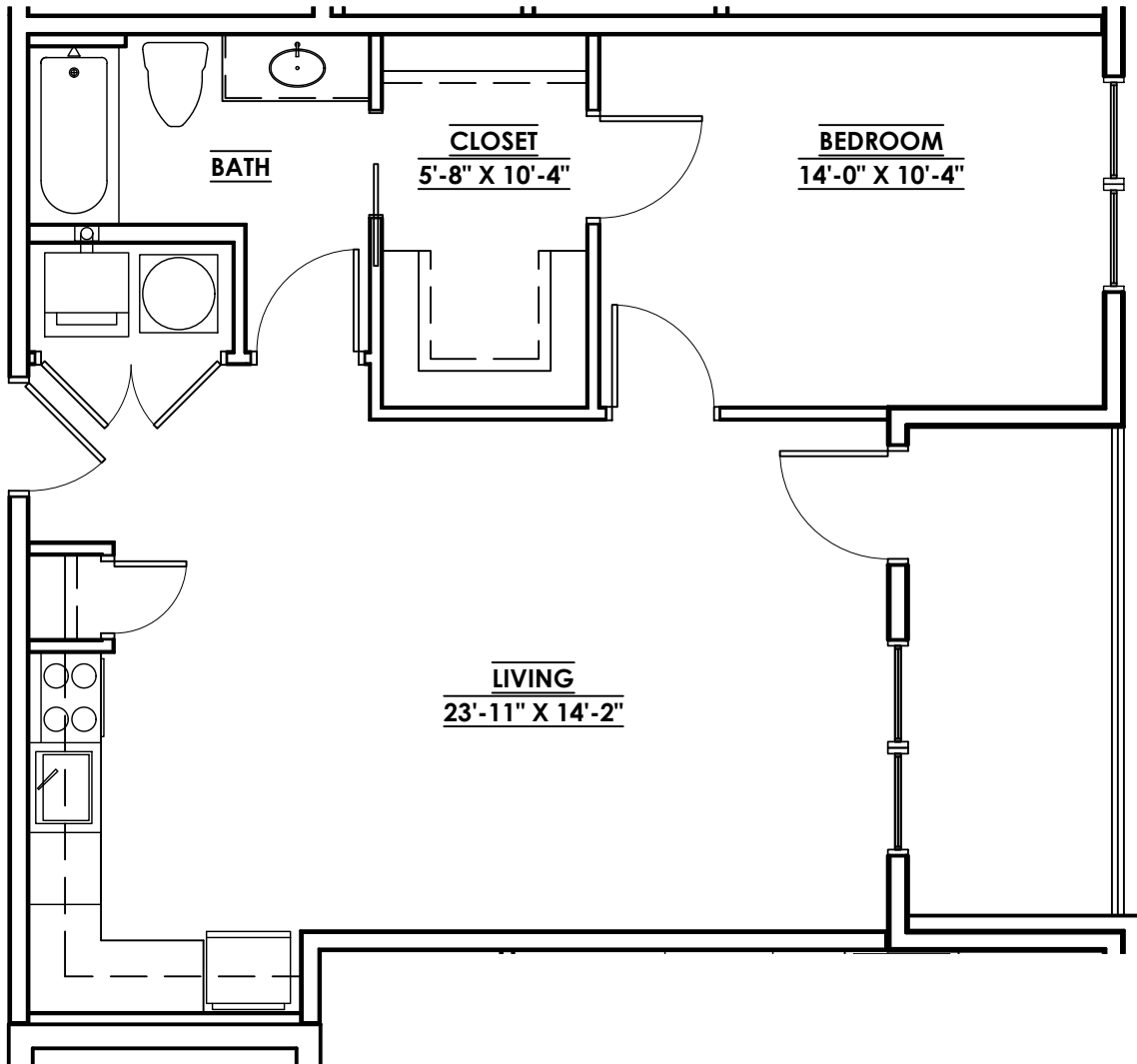


COMMON AREA
2,500 SF

DISCLAIMER: Square footage and dimensional data is approximate. Unit layouts are for general reference only and are not intended to depict precisely the as-built conditions. Drawings are not to scale and are subject to change.

901 Porter Street

OLD MANCHESTER
RICHMOND, VA

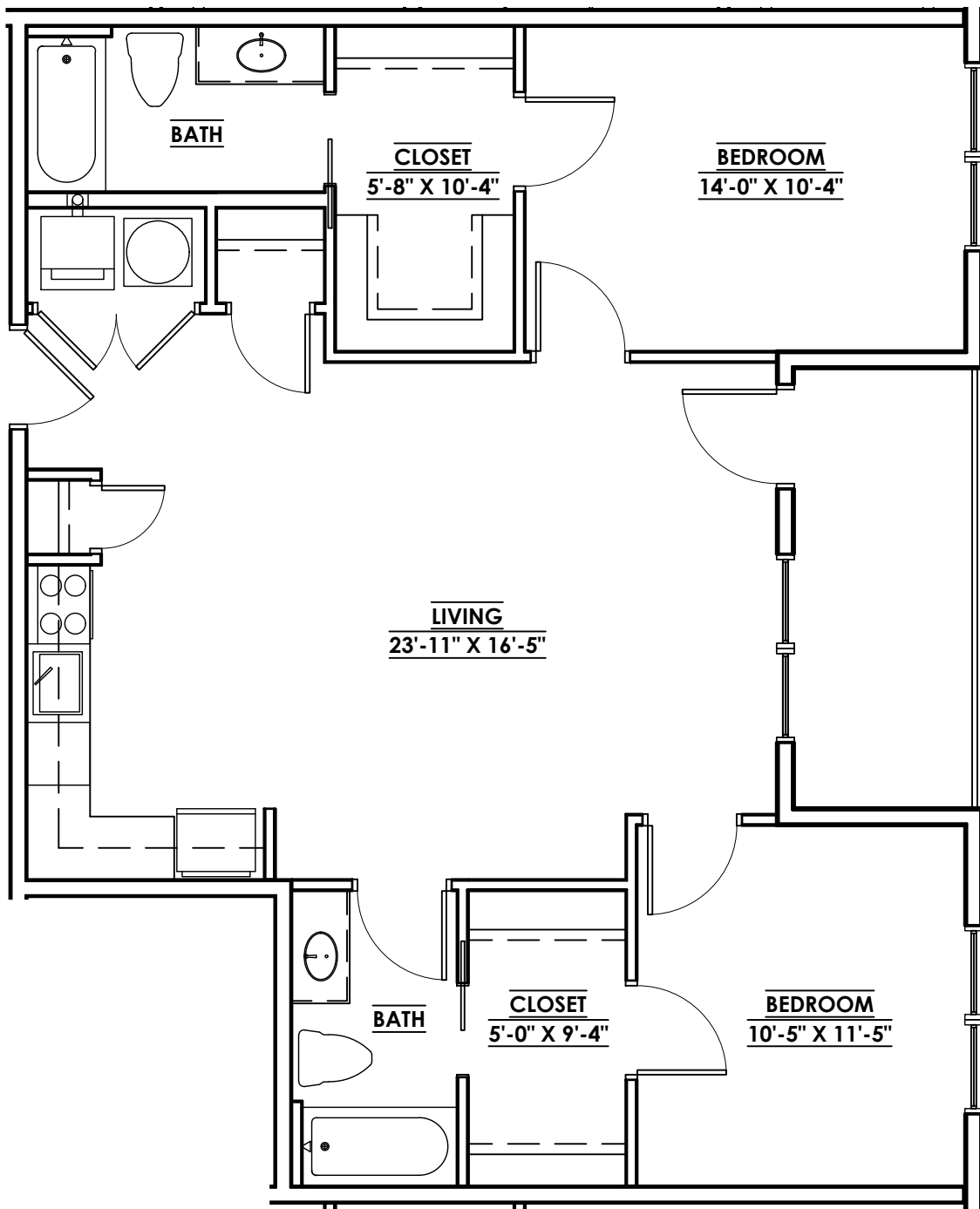


UNIT: 102
705 SF
84 SF Balcony

DISCLAIMER: Square footage and dimensional data is approximate. Unit layouts are for general reference only and are not intended to depict precisely the as-built conditions. Drawings are not to scale and are subject to change.

901 Porter Street

OLD MANCHESTER
RICHMOND, VA



UNIT: 103, 203, & 303

973 SF - 84 SF Balcony

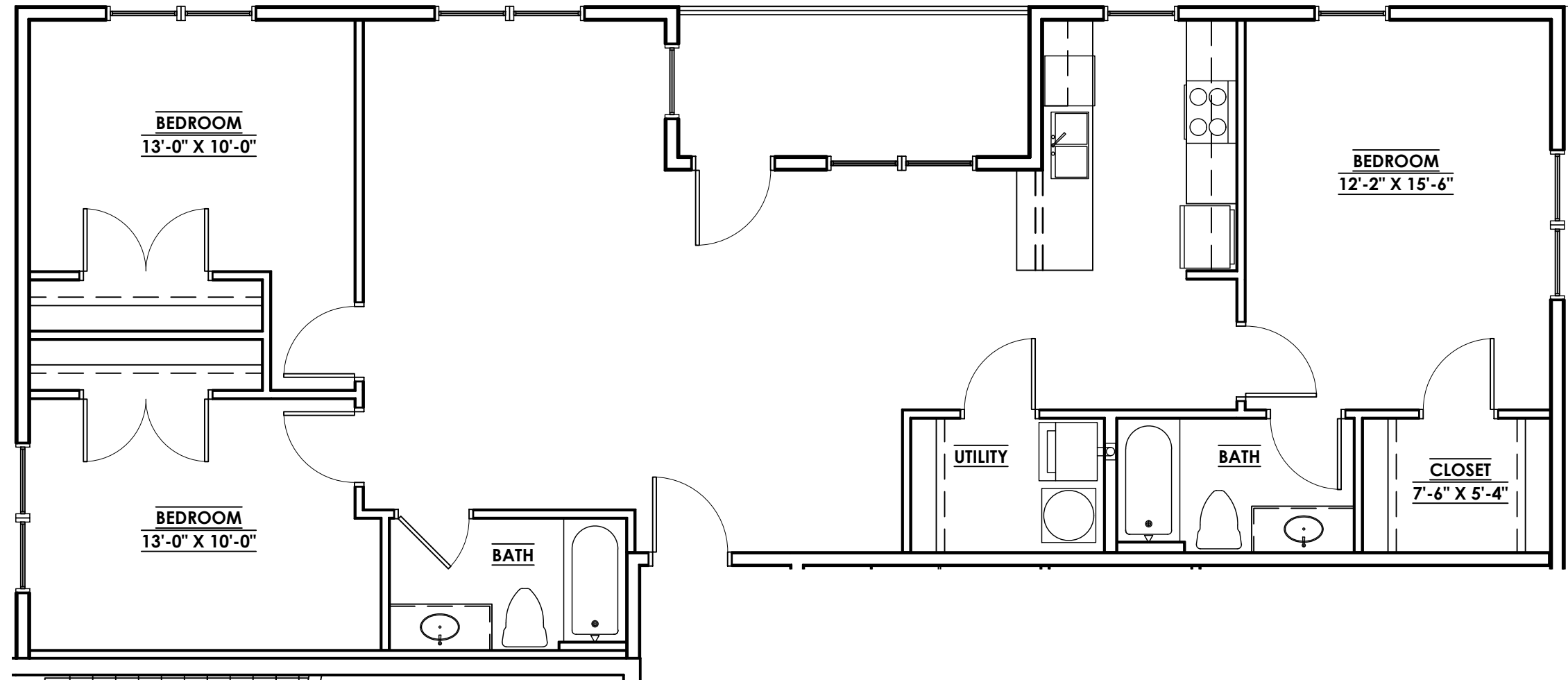
UNIT: 202, & 302

984 SF - 84 SF Balcony

DISCLAIMER: Square footage and dimensional data is approximate. Unit layouts are for general reference only and are not intended to depict precisely the as-built conditions. Drawings are not to scale and are subject to change.

901 Porter Street

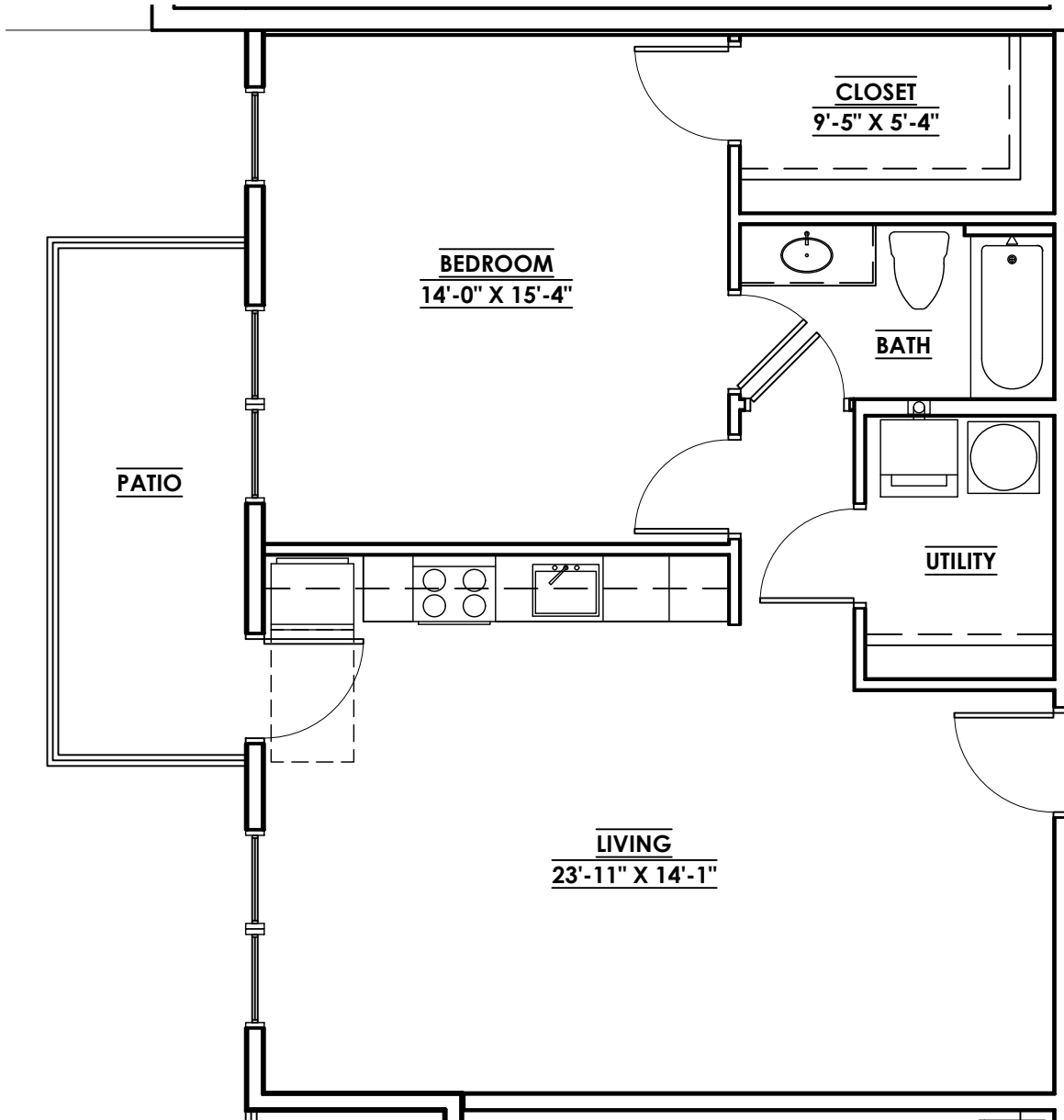
OLD MANCHESTER
RICHMOND, VA



UNIT: 104, 204, 304
1,383 SF
84 SF Balcony

DISCLAIMER: Square footage and dimensional data is approximate. Unit layouts are for general reference only and are not intended to depict precisely the as-built conditions. Drawings are not to scale and are subject to change.

901 Porter Street
OLD MANCHESTER
RICHMOND, VA

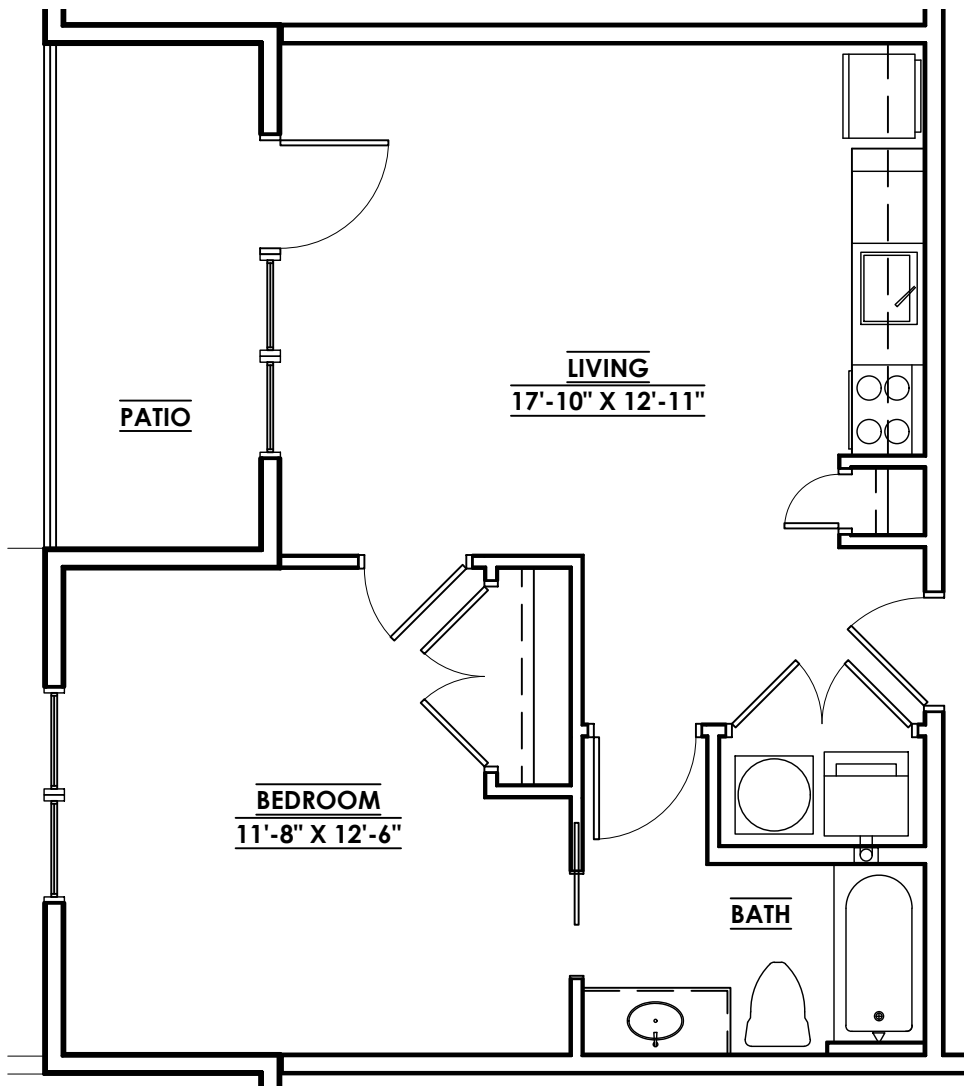


UNIT: 105
789 SF
84 SF Patio

DISCLAIMER: Square footage and dimensional data is approximate. Unit layouts are for general reference only and are not intended to depict precisely the as-built conditions. Drawings are not to scale and are subject to change.

901 Porter Street

OLD MANCHESTER
RICHMOND, VA

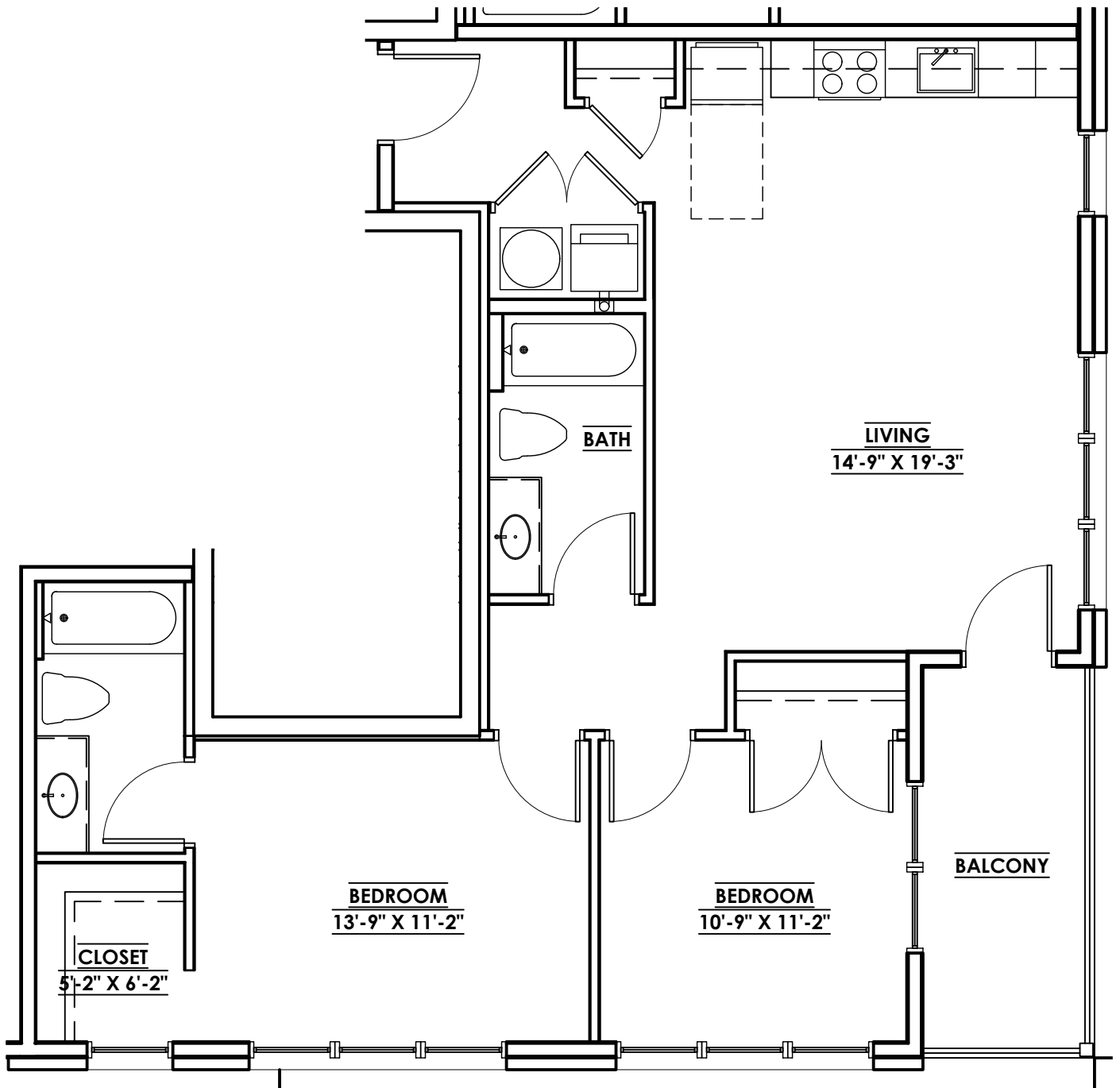


UNIT: 106
593 SF
84 SF Patio

DISCLAIMER: Square footage and dimensional data is approximate. Unit layouts are for general reference only and are not intended to depict precisely the as-built conditions. Drawings are not to scale and are subject to change.

901 Porter Street

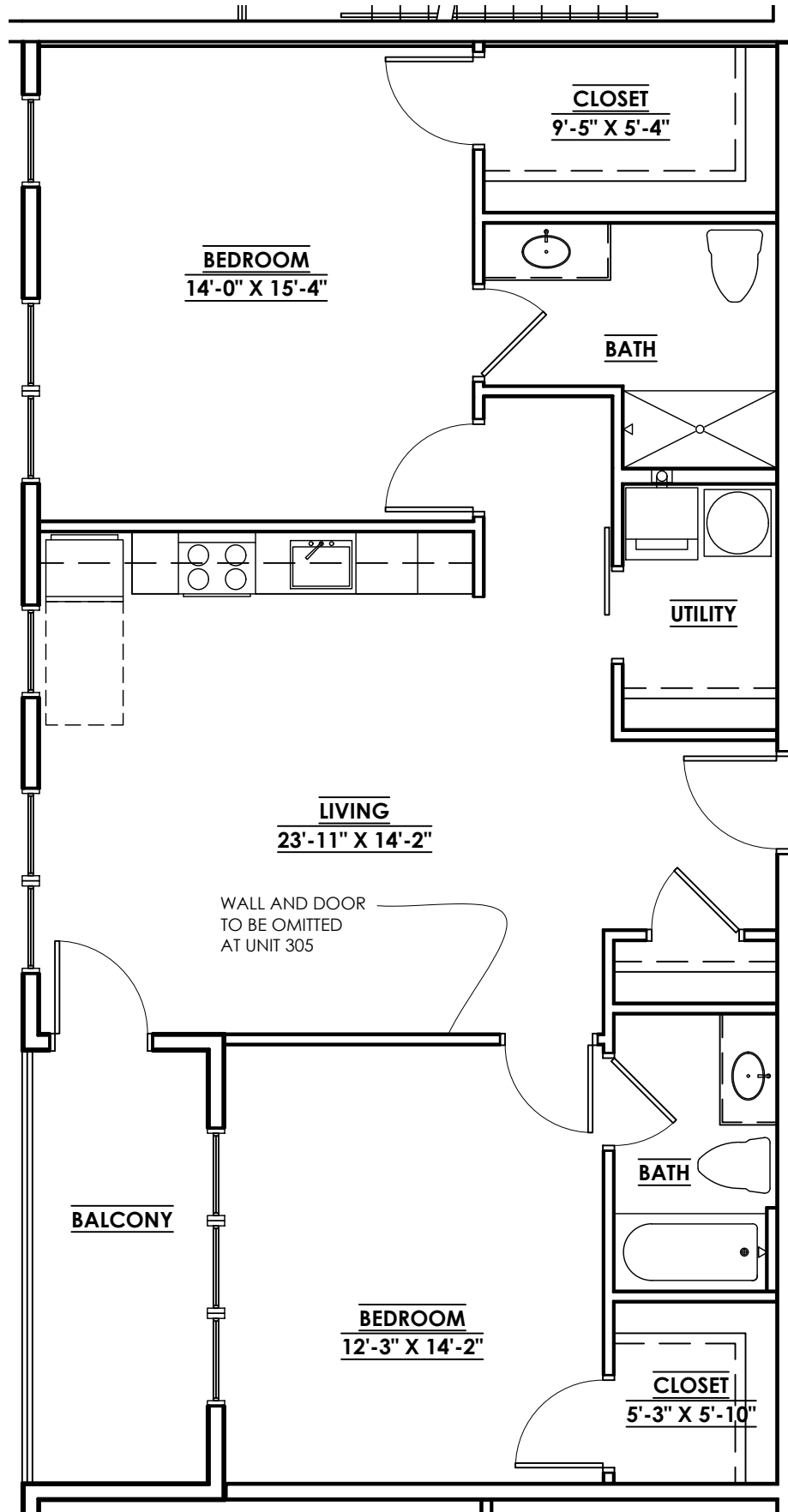
OLD MANCHESTER
RICHMOND, VA



UNIT: 201 & 301
 940 SF
 84 SF Balcony

DISCLAIMER: Square footage and dimensional data is approximate. Unit layouts are for general reference only and are not intended to depict precisely the as-built conditions. Drawings are not to scale and are subject to change.

901 Porter Street
 OLD MANCHESTER
 RICHMOND, VA

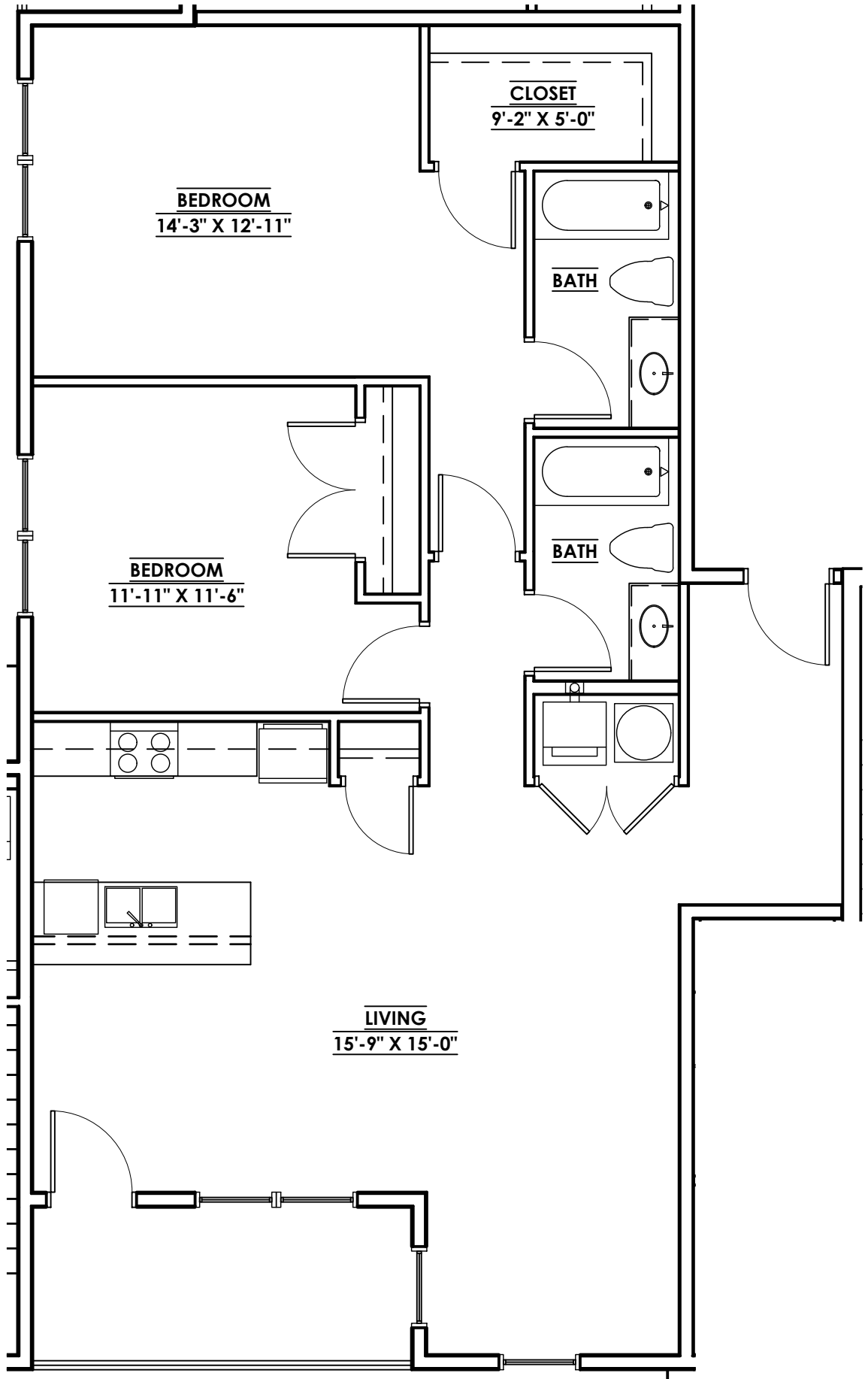


UNIT: 205 & 305
 1,063 SF
 84 SF Balcony

DISCLAIMER: Square footage and dimensional data is approximate. Unit layouts are for general reference only and are not intended to depict precisely the as-built conditions. Drawings are not to scale and are subject to change.

901 Porter Street

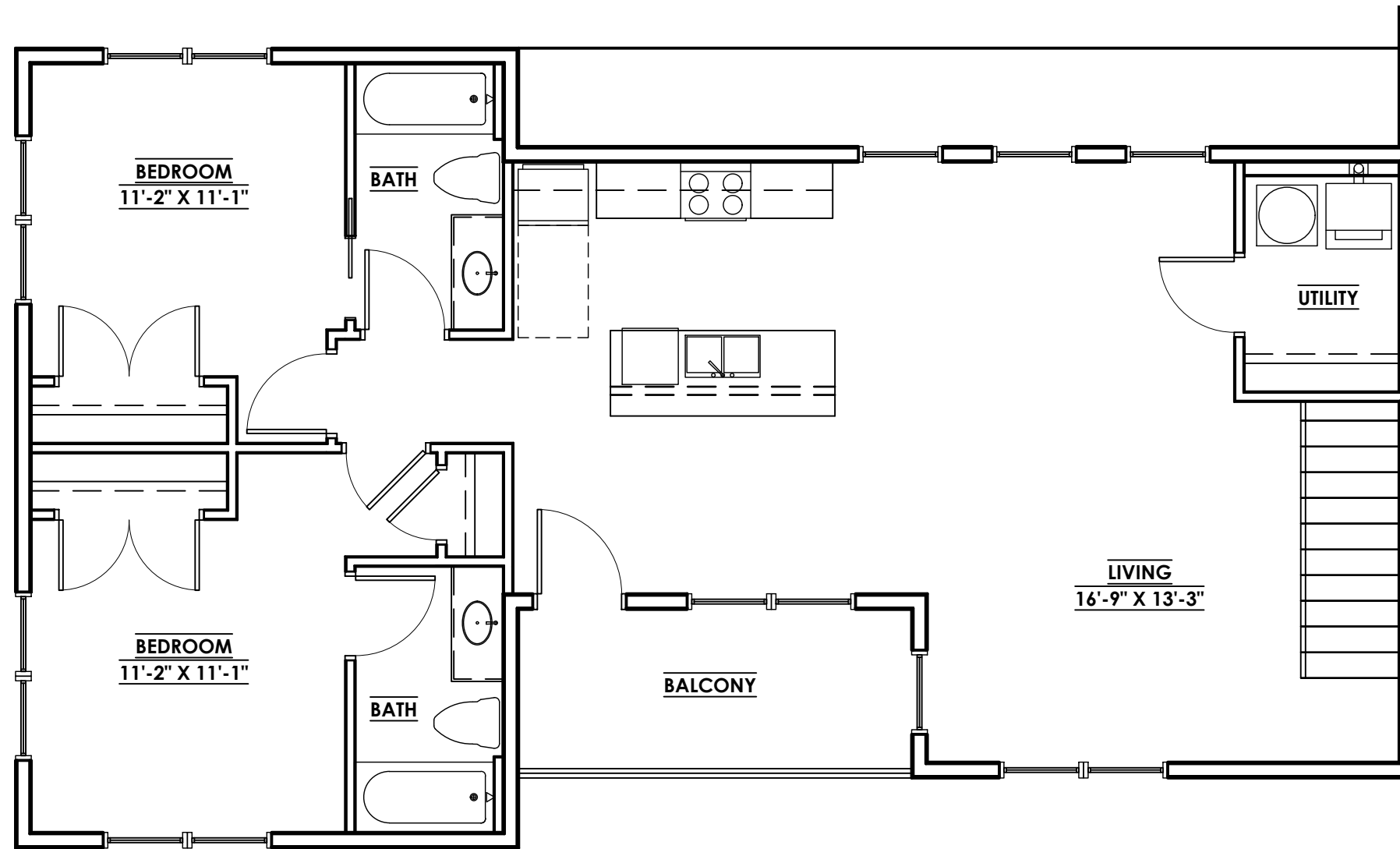
OLD MANCHESTER
 RICHMOND, VA



UNIT: 206 & 306
 1,208 SF
 84 SF Balcony

DISCLAIMER: Square footage and dimensional data is approximate. Unit layouts are for general reference only and are not intended to depict precisely the as-built conditions. Drawings are not to scale and are subject to change.

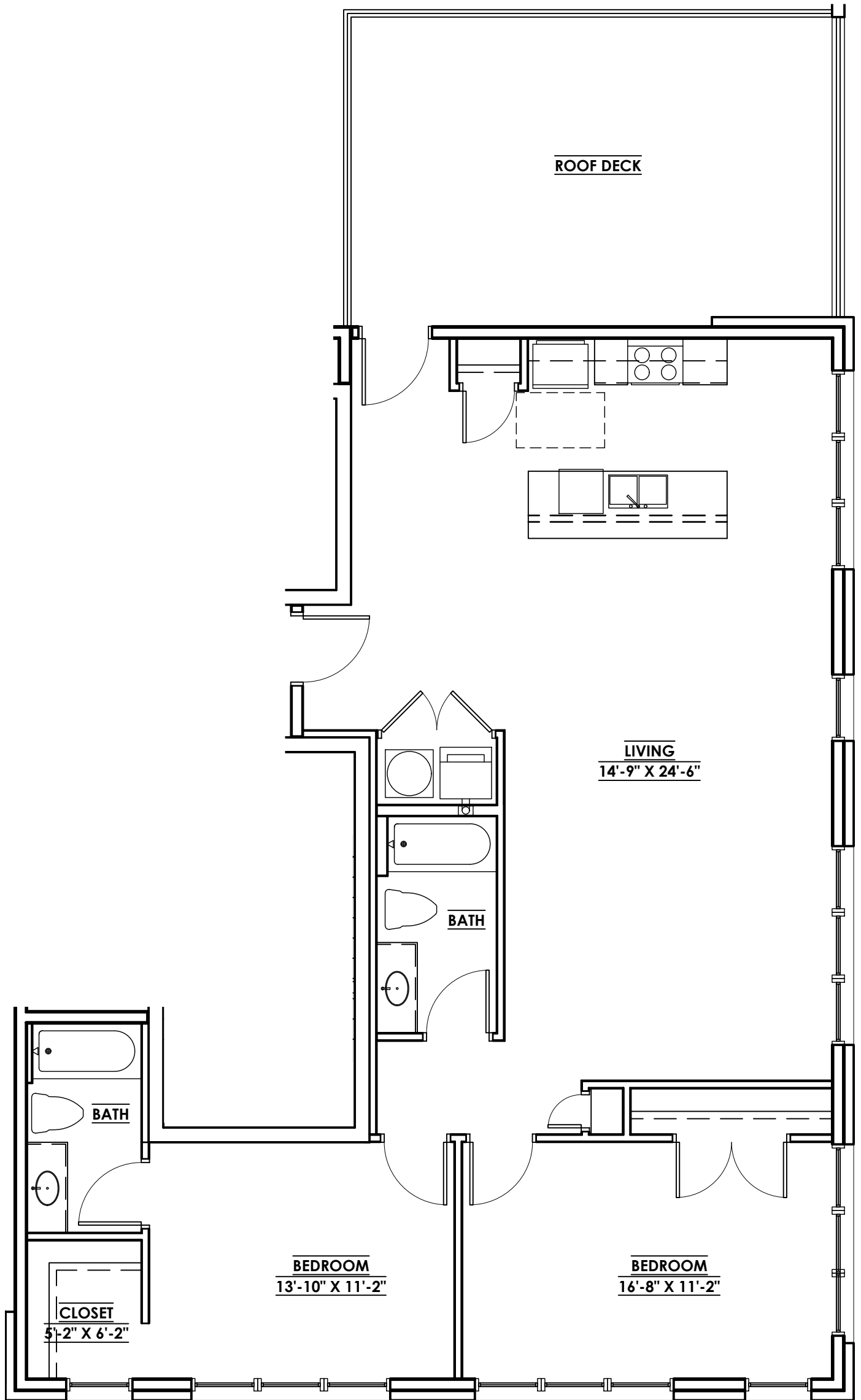
901 Porter Street
 OLD MANCHESTER
 RICHMOND, VA



UNIT: 207
1,181 SF
84 SF Balcony

DISCLAIMER: Square footage and dimensional data is approximate. Unit layouts are for general reference only and are not intended to depict precisely the as-built conditions. Drawings are not to scale and are subject to change.

901 Porter Street
OLD MANCHESTER
RICHMOND, VA



UNIT: 401
 1,319 SF
 300 SF Roof Deck

DISCLAIMER: Square footage and dimensional data is approximate. Unit layouts are for general reference only and are not intended to depict precisely the as-built conditions. Drawings are not to scale and are subject to change.

901 Porter Street
 OLD MANCHESTER
 RICHMOND, VA